

# CABINET KNOBS



3070

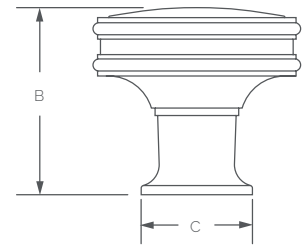
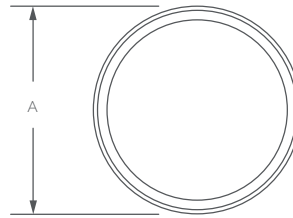


3071



3072

PRODUCT NUMBER	A	B	C
3070 Knob	1"	7/8"	5/8"
3071 Knob	1-1/4"	1-1/8"	43/64"
3072 Knob	1-1/2"	1-11/32"	13/16"

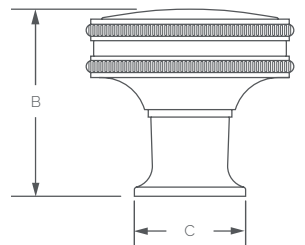
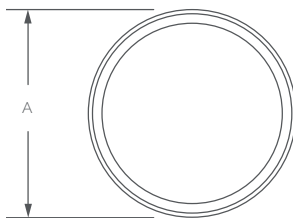


3074



3075

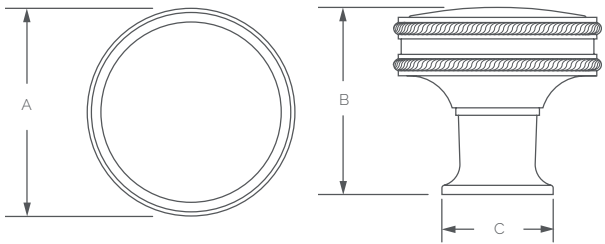
PRODUCT NUMBER	A	B	C
3074 Knob - Coin	1-1/4"	1-1/8"	43/64"
3075 Knob - Coin	1-1/2"	1-11/32"	13/16"



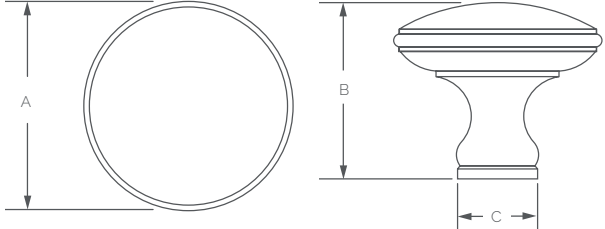
CABINET KNOBS



PRODUCT NUMBER	A	B	C
3077 Knob - Rope	1-1/4"	1-1/8"	43/64"
3078 Knob - Rope	1-1/2"	1-11/32"	13/16"



PRODUCT NUMBER	A	B	C
3080 Knob	1"	27/32"	3/8"
3081 Knob	1-1/4"	1-1/8"	15/32"
3082 Knob	1-1/2"	1-11/32"	9/16"

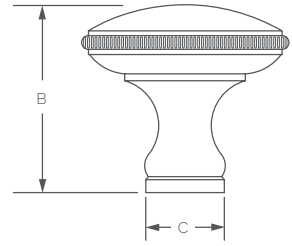
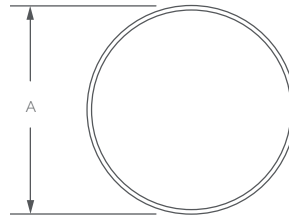


CABINET KNOBS



3084

3085



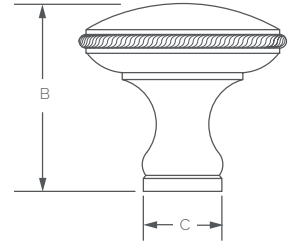
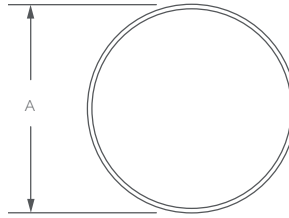
**PRODUCT NUMBER**

	<b>A</b>	<b>B</b>	<b>C</b>
<b>3084</b> Knob - Coin	1-1/4"	1-1/8"	15/32"
<b>3085</b> Knob - Coin	1-1/2"	1-11/32"	9/16"



3087

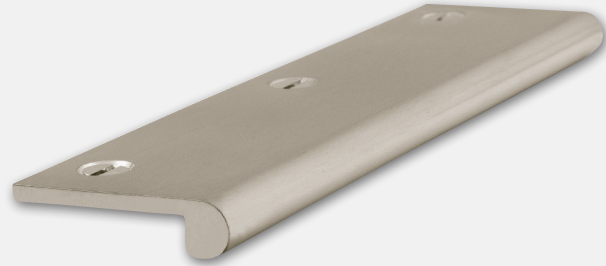
3088



**PRODUCT NUMBER**

	<b>A</b>	<b>B</b>	<b>C</b>
<b>3087</b> Knob - Rope	1-1/4"	1-1/8"	15/32"
<b>3088</b> Knob - Rope	1-1/2"	1-11/32"	9/16"

# EDGE PULLS

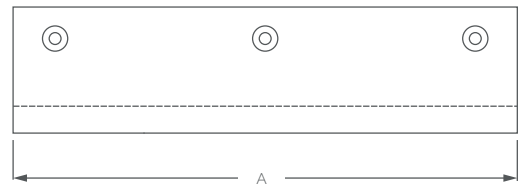
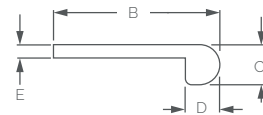


11706

PRODUCT NUMBER	A	B	C	D	E
<b>11702</b> Edge Pull - Bullnose	2"	1-9/16"	3/8"	5/16"	1/8"
<b>11704</b> Edge Pull - Bullnose	4"	1-9/16"	3/8"	5/16"	1/8"
<b>11706</b> Edge Pull - Bullnose	6"	1-9/16"	3/8"	5/16"	1/8"
<b>11708</b> Edge Pull - Bullnose	8"	1-9/16"	3/8"	5/16"	1/8"
<b>11710</b> Edge Pull - Bullnose	10"	1-9/16"	3/8"	5/16"	1/8"
<b>11712</b> Edge Pull - Bullnose	12"	1-9/16"	3/8"	5/16"	1/8"
<b>11718</b> Edge Pull - Bullnose	18"	1-9/16"	3/8"	5/16"	1/8"
<b>11720</b> Edge Pull - Bullnose	24"	1-9/16"	3/8"	5/16"	1/8"
<b>11721</b> Edge Pull - Bullnose	30"	1-9/16"	3/8"	5/16"	1/8"
<b>11722</b> Edge Pull - Bullnose	36"	1-9/16"	3/8"	5/16"	1/8"
<b>11724</b> Edge Pull - Bullnose	48"	1-9/16"	3/8"	5/16"	1/8"

**REMEMBER**

Custom lengths available.



# EDGE PULLS



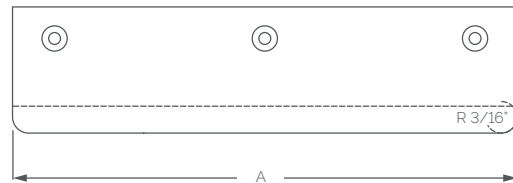
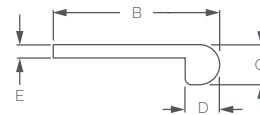
11736

**PRODUCT NUMBER**

	<b>A</b>	<b>B</b>	<b>C</b>	<b>D</b>	<b>E</b>
<b>11732</b> Edge Pull - Bullnose w/ Radius	2"	1-9/16"	3/8"	5/16"	1/8"
<b>11734</b> Edge Pull - Bullnose w/ Radius	4"	1-9/16"	3/8"	5/16"	1/8"
<b>11736</b> Edge Pull - Bullnose w/ Radius	6"	1-9/16"	3/8"	5/16"	1/8"
<b>11738</b> Edge Pull - Bullnose w/ Radius	8"	1-9/16"	3/8"	5/16"	1/8"
<b>11740</b> Edge Pull - Bullnose w/ Radius	10"	1-9/16"	3/8"	5/16"	1/8"
<b>11742</b> Edge Pull - Bullnose w/ Radius	12"	1-9/16"	3/8"	5/16"	1/8"
<b>11748</b> Edge Pull - Bullnose w/ Radius	18"	1-9/16"	3/8"	5/16"	1/8"
<b>11750</b> Edge Pull - Bullnose w/ Radius	24"	1-9/16"	3/8"	5/16"	1/8"
<b>11751</b> Edge Pull - Bullnose w/ Radius	30"	1-9/16"	3/8"	5/16"	1/8"
<b>11752</b> Edge Pull - Bullnose w/ Radius	36"	1-9/16"	3/8"	5/16"	1/8"
<b>11753</b> Edge Pull - Bullnose w/ Radius	48"	1-9/16"	3/8"	5/16"	1/8"

**REMEMBER**

Custom lengths available.



# EDGE PULLS

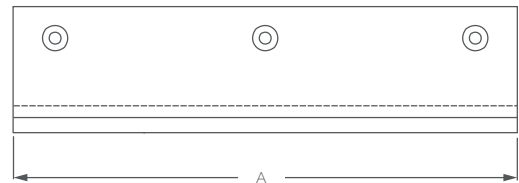
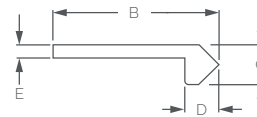


11766

PRODUCT NUMBER	A	B	C	D	E
<b>11762</b> Edge Pull - Diamond	2"	1-9/16"	3/8"	5/16"	1/8"
<b>11764</b> Edge Pull - Diamond	4"	1-9/16"	3/8"	5/16"	1/8"
<b>11766</b> Edge Pull - Diamond	6"	1-9/16"	3/8"	5/16"	1/8"
<b>11768</b> Edge Pull - Diamond	8"	1-9/16"	3/8"	5/16"	1/8"
<b>11770</b> Edge Pull - Diamond	10"	1-9/16"	3/8"	5/16"	1/8"
<b>11772</b> Edge Pull - Diamond	12"	1-9/16"	3/8"	5/16"	1/8"
<b>11778</b> Edge Pull - Diamond	18"	1-9/16"	3/8"	5/16"	1/8"
<b>11780</b> Edge Pull - Diamond	24"	1-9/16"	3/8"	5/16"	1/8"
<b>11781</b> Edge Pull - Diamond	30"	1-9/16"	3/8"	5/16"	1/8"
<b>11782</b> Edge Pull - Diamond	36"	1-9/16"	3/8"	5/16"	1/8"
<b>11784</b> Edge Pull - Diamond	48"	1-9/16"	3/8"	5/16"	1/8"

**REMEMBER**

Custom lengths available.



# EDGE PULLS

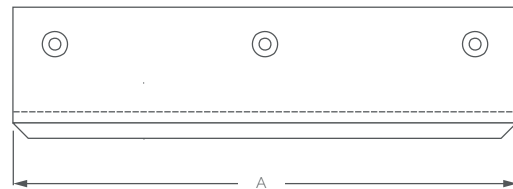
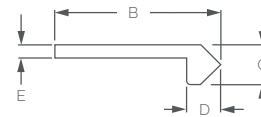


11806

PRODUCT NUMBER	A	B	C	D	E
<b>11802</b> Edge Pull - Diamond w/ Facets	2"	1-9/16"	3/8"	5/16"	1/8"
<b>11804</b> Edge Pull - Diamond w/ Facets	4"	1-9/16"	3/8"	5/16"	1/8"
<b>11806</b> Edge Pull - Diamond w/ Facets	6"	1-9/16"	3/8"	5/16"	1/8"
<b>11808</b> Edge Pull - Diamond w/ Facets	8"	1-9/16"	3/8"	5/16"	1/8"
<b>11810</b> Edge Pull - Diamond w/ Facets	10"	1-9/16"	3/8"	5/16"	1/8"
<b>11812</b> Edge Pull - Diamond w/ Facets	12"	1-9/16"	3/8"	5/16"	1/8"
<b>11818</b> Edge Pull - Diamond w/ Facets	18"	1-9/16"	3/8"	5/16"	1/8"
<b>11820</b> Edge Pull - Diamond w/ Facets	24"	1-9/16"	3/8"	5/16"	1/8"
<b>11821</b> Edge Pull - Diamond w/ Facets	30"	1-9/16"	3/8"	5/16"	1/8"
<b>11822</b> Edge Pull - Diamond w/ Facets	36"	1-9/16"	3/8"	5/16"	1/8"
<b>11824</b> Edge Pull - Diamond w/ Facets	48"	1-9/16"	3/8"	5/16"	1/8"

**REMEMBER**

Custom lengths available.



# EDGE PULLS

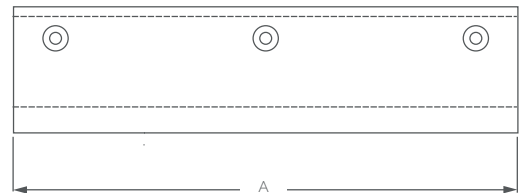
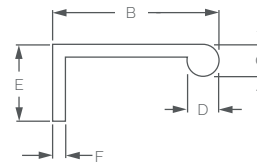


11836

PRODUCT NUMBER	A	B	C	D	E	F
11832 Edge Pull - Round w/ Backmount	2"	1-5/8"	5/16"	5/16"	3/4"	1/8"
11834 Edge Pull - Round w/ Backmount	4"	1-5/8"	5/16"	5/16"	3/4"	1/8"
11836 Edge Pull - Round w/ Backmount	6"	1-5/8"	5/16"	5/16"	3/4"	1/8"
11838 Edge Pull - Round w/ Backmount	8"	1-5/8"	5/16"	5/16"	3/4"	1/8"
11840 Edge Pull - Round w/ Backmount	10"	1-5/8"	5/16"	5/16"	3/4"	1/8"
11842 Edge Pull - Round w/ Backmount	12"	1-5/8"	5/16"	5/16"	3/4"	1/8"
11848 Edge Pull - Round w/ Backmount	18"	1-5/8"	5/16"	5/16"	3/4"	1/8"
11850 Edge Pull - Round w/ Backmount	24"	1-5/8"	5/16"	5/16"	3/4"	1/8"
11851 Edge Pull - Round w/ Backmount	30"	1-5/8"	5/16"	5/16"	3/4"	1/8"
11852 Edge Pull - Round w/ Backmount	36"	1-5/8"	5/16"	5/16"	3/4"	1/8"
11854 Edge Pull - Round w/ Backmount	48"	1-5/8"	5/16"	5/16"	3/4"	1/8"

**REMEMBER**

Custom lengths available.





# EDGE PULLS

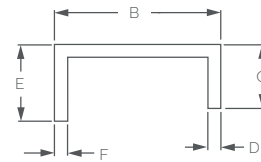


11866

PRODUCT NUMBER	A	B	C	D	E	F
<b>11862</b> Edge Pull - Angle w/ Backmount	2"	1-5/8"	5/8"	1/8"	3/4"	1/8"
<b>11864</b> Edge Pull - Angle w/ Backmount	4"	1-5/8"	5/8"	1/8"	3/4"	1/8"
<b>11866</b> Edge Pull - Angle w/ Backmount	6"	1-5/8"	5/8"	1/8"	3/4"	1/8"
<b>11868</b> Edge Pull - Angle w/ Backmount	8"	1-5/8"	5/8"	1/8"	3/4"	1/8"
<b>11870</b> Edge Pull - Angle w/ Backmount	10"	1-5/8"	5/8"	1/8"	3/4"	1/8"
<b>11872</b> Edge Pull - Angle w/ Backmount	12"	1-5/8"	5/8"	1/8"	3/4"	1/8"
<b>11878</b> Edge Pull - Angle w/ Backmount	18"	1-5/8"	5/8"	1/8"	3/4"	1/8"
<b>11880</b> Edge Pull - Angle w/ Backmount	24"	1-5/8"	5/8"	1/8"	3/4"	1/8"
<b>11881</b> Edge Pull - Angle w/ Backmount	30"	1-5/8"	5/8"	1/8"	3/4"	1/8"
<b>11882</b> Edge Pull - Angle w/ Backmount	36"	1-5/8"	5/8"	1/8"	3/4"	1/8"
<b>11884</b> Edge Pull - Angle w/ Backmount	48"	1-5/8"	5/8"	1/8"	3/4"	1/8"

**REMEMBER**

Custom lengths available.



# EDGE PULLS

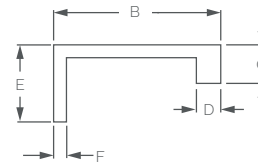


11906

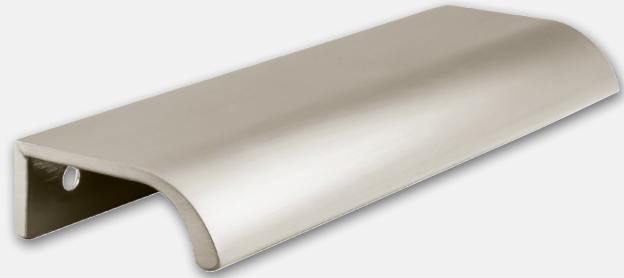
PRODUCT NUMBER	A	B	C	D	E	F
11902 Edge Pull - Square w/ Backmount	2"	1-5/8"	3/8"	1/4"	3/4"	1/8"
11904 Edge Pull - Square w/ Backmount	4"	1-5/8"	3/8"	1/4"	3/4"	1/8"
11906 Edge Pull - Square w/ Backmount	6"	1-5/8"	3/8"	1/4"	3/4"	1/8"
11908 Edge Pull - Square w/ Backmount	8"	1-5/8"	3/8"	1/4"	3/4"	1/8"
11910 Edge Pull - Square w/ Backmount	10"	1-5/8"	3/8"	1/4"	3/4"	1/8"
11912 Edge Pull - Square w/ Backmount	12"	1-5/8"	3/8"	1/4"	3/4"	1/8"
11918 Edge Pull - Square w/ Backmount	18"	1-5/8"	3/8"	1/4"	3/4"	1/8"
11924 Edge Pull - Square w/ Backmount	24"	1-5/8"	3/8"	1/4"	3/4"	1/8"
11930 Edge Pull - Square w/ Backmount	30"	1-5/8"	3/8"	1/4"	3/4"	1/8"
11936 Edge Pull - Square w/ Backmount	36"	1-5/8"	3/8"	1/4"	3/4"	1/8"
11948 Edge Pull - Square w/ Backmount	48"	1-5/8"	3/8"	1/4"	3/4"	1/8"

**REMEMBER**

Custom lengths available.



# EDGE PULLS

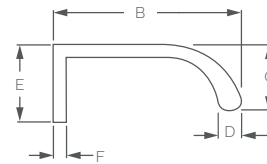


11956

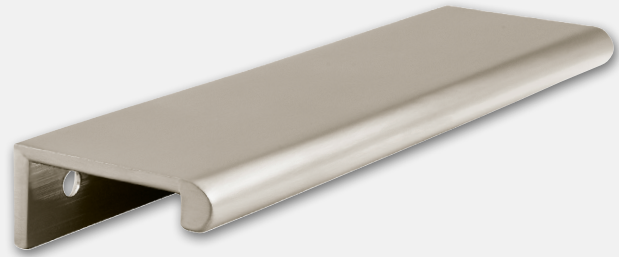
PRODUCT NUMBER	A	B	C	D	E	F
<b>11952</b> Edge Pull - Curve w/ Backmount	2"	1-13/16"	5/8"	1/8"	3/4"	1/8"
<b>11954</b> Edge Pull - Curve w/ Backmount	4"	1-13/16"	5/8"	1/8"	3/4"	1/8"
<b>11956</b> Edge Pull - Curve w/ Backmount	6"	1-13/16"	5/8"	1/8"	3/4"	1/8"
<b>11958</b> Edge Pull - Curve w/ Backmount	8"	1-13/16"	5/8"	1/8"	3/4"	1/8"
<b>11960</b> Edge Pull - Curve w/ Backmount	10"	1-13/16"	5/8"	1/8"	3/4"	1/8"
<b>11962</b> Edge Pull - Curve w/ Backmount	12"	1-13/16"	5/8"	1/8"	3/4"	1/8"
<b>11968</b> Edge Pull - Curve w/ Backmount	18"	1-13/16"	5/8"	1/8"	3/4"	1/8"
<b>11974</b> Edge Pull - Curve w/ Backmount	24"	1-13/16"	5/8"	1/8"	3/4"	1/8"
<b>11980</b> Edge Pull - Curve w/ Backmount	30"	1-13/16"	5/8"	1/8"	3/4"	1/8"
<b>11984</b> Edge Pull - Curve w/ Backmount	36"	1-13/16"	5/8"	1/8"	3/4"	1/8"
<b>11988</b> Edge Pull - Curve w/ Backmount	48"	1-13/16"	5/8"	1/8"	3/4"	1/8"

**REMEMBER**

Custom lengths available.



# EDGE PULLS

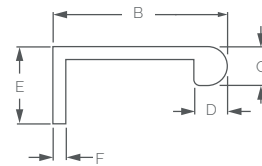


12006

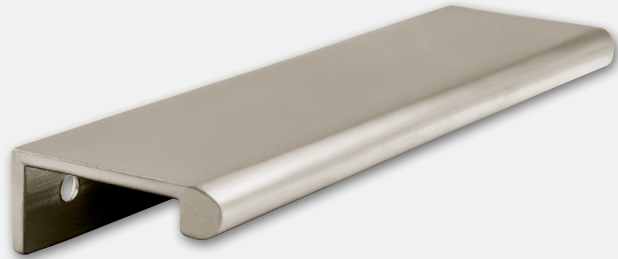
PRODUCT NUMBER	A	B	C	D	E	F
12002 Edge Pull - Bullnose w/ Backmount	2"	1-11/16"	3/8"	5/16"	3/4"	1/8"
12004 Edge Pull - Bullnose w/ Backmount	4"	1-11/16"	3/8"	5/16"	3/4"	1/8"
12006 Edge Pull - Bullnose w/ Backmount	6"	1-11/16"	3/8"	5/16"	3/4"	1/8"
12008 Edge Pull - Bullnose w/ Backmount	8"	1-11/16"	3/8"	5/16"	3/4"	1/8"
12010 Edge Pull - Bullnose w/ Backmount	10"	1-11/16"	3/8"	5/16"	3/4"	1/8"
12012 Edge Pull - Bullnose w/ Backmount	12"	1-11/16"	3/8"	5/16"	3/4"	1/8"
12018 Edge Pull - Bullnose w/ Backmount	18"	1-11/16"	3/8"	5/16"	3/4"	1/8"
12024 Edge Pull - Bullnose w/ Backmount	24"	1-11/16"	3/8"	5/16"	3/4"	1/8"
12030 Edge Pull - Bullnose w/ Backmount	30"	1-11/16"	3/8"	5/16"	3/4"	1/8"
12036 Edge Pull - Bullnose w/ Backmount	36"	1-11/16"	3/8"	5/16"	3/4"	1/8"
12048 Edge Pull - Bullnose w/ Backmount	48"	1-11/16"	3/8"	5/16"	3/4"	1/8"

**REMEMBER**

Custom lengths available.



# EDGE PULLS

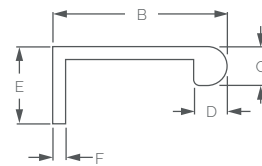


12056

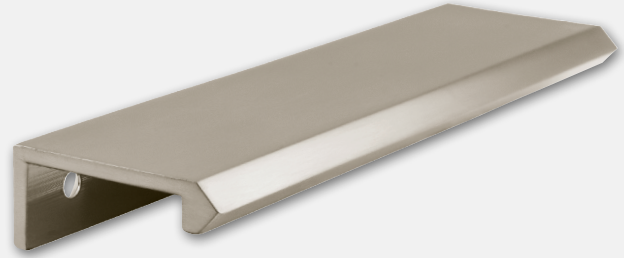
PRODUCT NUMBER	A	B	C	D	E	F
<b>12052</b> Edge Pull - Bullnose w/ Radius & Backmount	2"	1-11/16"	3/8"	5/16"	3/4"	1/8"
<b>12054</b> Edge Pull - Bullnose w/ Radius & Backmount	4"	1-11/16"	3/8"	5/16"	3/4"	1/8"
<b>12056</b> Edge Pull - Bullnose w/ Radius & Backmount	6"	1-11/16"	3/8"	5/16"	3/4"	1/8"
<b>12058</b> Edge Pull - Bullnose w/ Radius & Backmount	8"	1-11/16"	3/8"	5/16"	3/4"	1/8"
<b>12060</b> Edge Pull - Bullnose w/ Radius & Backmount	10"	1-11/16"	3/8"	5/16"	3/4"	1/8"
<b>12062</b> Edge Pull - Bullnose w/ Radius & Backmount	12"	1-11/16"	3/8"	5/16"	3/4"	1/8"
<b>12068</b> Edge Pull - Bullnose w/ Radius & Backmount	18"	1-11/16"	3/8"	5/16"	3/4"	1/8"
<b>12074</b> Edge Pull - Bullnose w/ Radius & Backmount	24"	1-11/16"	3/8"	5/16"	3/4"	1/8"
<b>12080</b> Edge Pull - Bullnose w/ Radius & Backmount	30"	1-11/16"	3/8"	5/16"	3/4"	1/8"
<b>12086</b> Edge Pull - Bullnose w/ Radius & Backmount	36"	1-11/16"	3/8"	5/16"	3/4"	1/8"
<b>12088</b> Edge Pull - Bullnose w/ Radius & Backmount	48"	1-11/16"	3/8"	5/16"	3/4"	1/8"

**REMEMBER**

Custom lengths available.



# EDGE PULLS

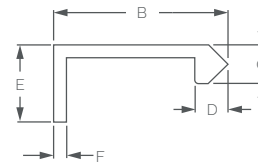


12106

PRODUCT NUMBER	A	B	C	D	E	F
12102 Edge Pull - Diamond w/ Backmount	2"	1-11/16"	3/8"	5/16"	3/4"	1/8"
12104 Edge Pull - Diamond w/ Backmount	4"	1-11/16"	3/8"	5/16"	3/4"	1/8"
12106 Edge Pull - Diamond w/ Backmount	6"	1-11/16"	3/8"	5/16"	3/4"	1/8"
12108 Edge Pull - Diamond w/ Backmount	8"	1-11/16"	3/8"	5/16"	3/4"	1/8"
12110 Edge Pull - Diamond w/ Backmount	10"	1-11/16"	3/8"	5/16"	3/4"	1/8"
12112 Edge Pull - Diamond w/ Backmount	12"	1-11/16"	3/8"	5/16"	3/4"	1/8"
12118 Edge Pull - Diamond w/ Backmount	18"	1-11/16"	3/8"	5/16"	3/4"	1/8"
12124 Edge Pull - Diamond w/ Backmount	24"	1-11/16"	3/8"	5/16"	3/4"	1/8"
12130 Edge Pull - Diamond w/ Backmount	30"	1-11/16"	3/8"	5/16"	3/4"	1/8"
12136 Edge Pull - Diamond w/ Backmount	36"	1-11/16"	3/8"	5/16"	3/4"	1/8"
12138 Edge Pull - Diamond w/ Backmount	48"	1-11/16"	3/8"	5/16"	3/4"	1/8"

**REMEMBER**

Custom lengths available.



# EDGE PULLS

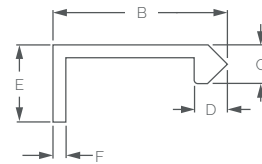


12156

PRODUCT NUMBER	A	B	C	D	E	F
12152 Edge Pull - Diamond w/ Facets & Backmount	2"	1-11/16"	3/8"	5/16"	3/4"	1/8"
12154 Edge Pull - Diamond w/ Facets & Backmount	4"	1-11/16"	3/8"	5/16"	3/4"	1/8"
12156 Edge Pull - Diamond w/ Facets & Backmount	6"	1-11/16"	3/8"	5/16"	3/4"	1/8"
12158 Edge Pull - Diamond w/ Facets & Backmount	8"	1-11/16"	3/8"	5/16"	3/4"	1/8"
12160 Edge Pull - Diamond w/ Facets & Backmount	10"	1-11/16"	3/8"	5/16"	3/4"	1/8"
12162 Edge Pull - Diamond w/ Facets & Backmount	12"	1-11/16"	3/8"	5/16"	3/4"	1/8"
12168 Edge Pull - Diamond w/ Facets & Backmount	18"	1-11/16"	3/8"	5/16"	3/4"	1/8"
12174 Edge Pull - Diamond w/ Facets & Backmount	24"	1-11/16"	3/8"	5/16"	3/4"	1/8"
12180 Edge Pull - Diamond w/ Facets & Backmount	30"	1-11/16"	3/8"	5/16"	3/4"	1/8"
12186 Edge Pull - Diamond w/ Facets & Backmount	36"	1-11/16"	3/8"	5/16"	3/4"	1/8"
12188 Edge Pull - Diamond w/ Facets & Backmount	48"	1-11/16"	3/8"	5/16"	3/4"	1/8"

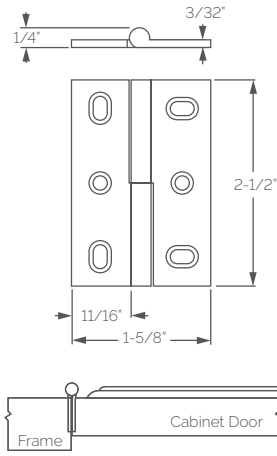
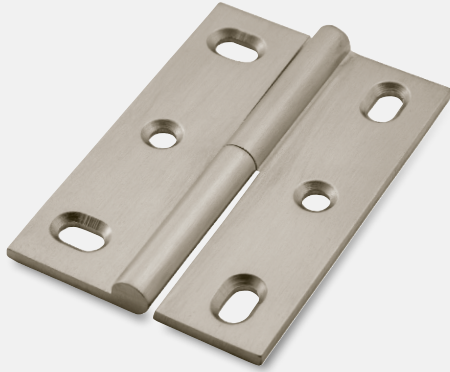
**REMEMBER**

Custom lengths available.

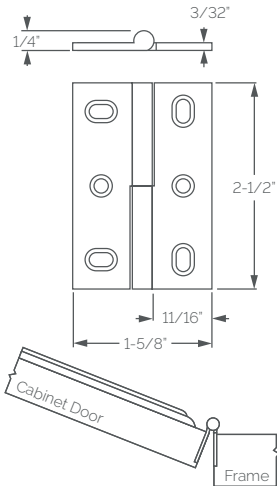
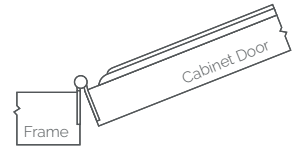


HINGES

LIFT OFF



**2590RH**  
Hinge: Right Hand



**2590LH**  
Hinge: Left Hand







## CABINET KNOBS

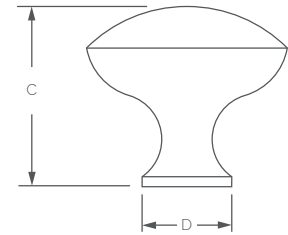
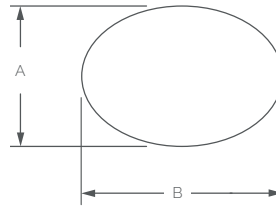


2870



2871

PRODUCT NUMBER	A	B	C	D
2870 Oval Knob	7/8"	7/8" x 1-1/4"	1-1/8"	5/8"
2871 Oval Knob	31/32"	1-3/8" x 31/32"	1-1/4"	5/8"



2864

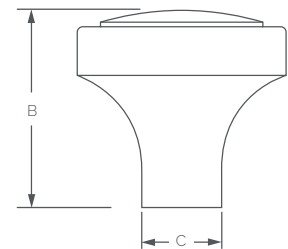
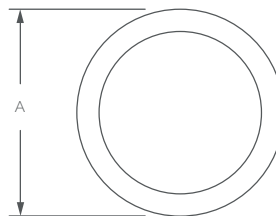


2866

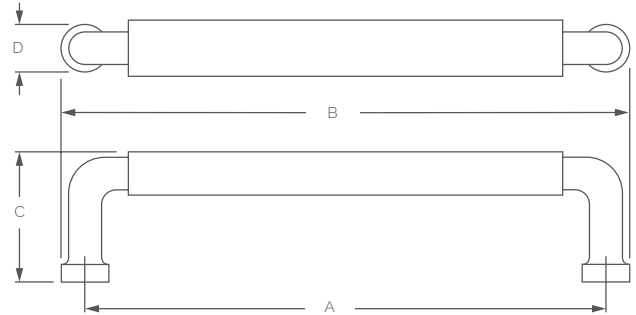


2868

PRODUCT NUMBER	A	B	C
2864 Knob	1"	31/32"	3/8"
2866 Knob	1-1/4"	1-3/16"	1/2"
2868 Knob	1-1/2"	1-7/16"	9/16"



## CABINET PULLS

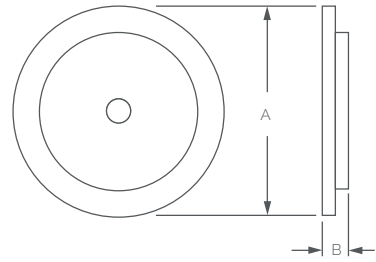


PRODUCT NUMBER	A	B	C	D
<b>2874</b> Oval Pull	4"	4-9/16"	1-1/2"	9/16"
<b>2876</b> Oval Pull	6"	6-9/16"	1-1/2"	9/16"
<b>2878</b> Oval Pull	8"	8-9/16"	1-1/2"	9/16"
<b>2882</b> Oval Pull	12"	12-9/16"	1-1/2"	9/16"
<b>2888</b> Oval Pull	18"	18-9/16"	1-1/2"	9/16"
<b>2892</b> Oval Appliance Pull	12"	13-3/32"	2-1/4"	1-3/32"
<b>2898</b> Oval Appliance Pull	18"	19-3/32"	2-1/4"	1-3/32"

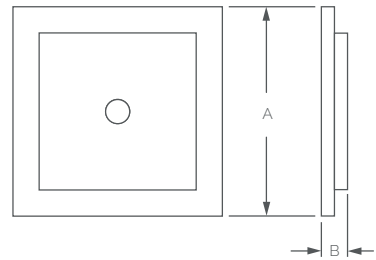
### REMEMBER

Appliance pulls are available as B-T-B and single sided applications.

BACKPLATES



PRODUCT NUMBER	A	B
2872 Backplate	1-1/2"	3/16"



PRODUCT NUMBER	A	B
2873 Square Backplate	1-1/2"	3/16"



# CABINET KNOBS



2203

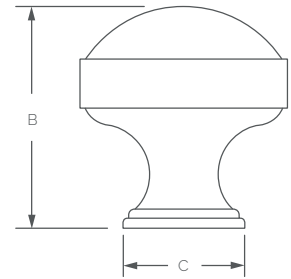
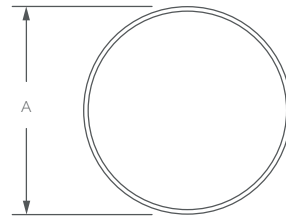


2205



2207

PRODUCT NUMBER	A	B	C
2203 Knob	1"	1-1/16"	19/32"
2205 Knob	1-1/4"	1-11/32"	23/32"
2207 Knob	1-1/2"	1-19/32"	7/8"

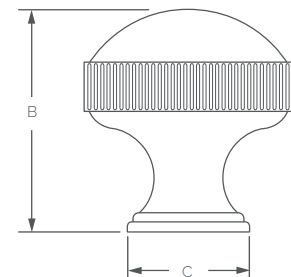
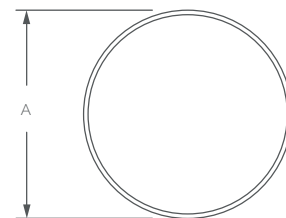


2209

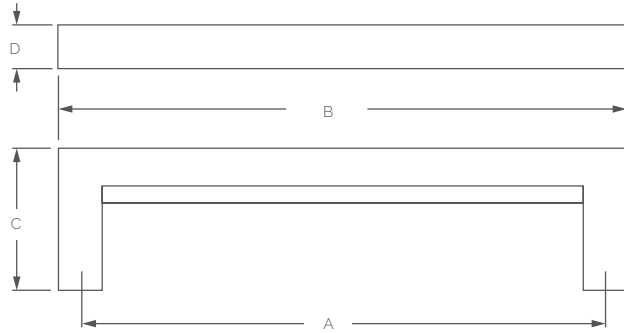


2210

PRODUCT NUMBER	A	B	C
2209 Knob - Coin	1-1/4"	1-11/32"	7/8"
2210 Knob - Coin	1-1/2"	1-19/32"	7/8"



## CABINET PULLS

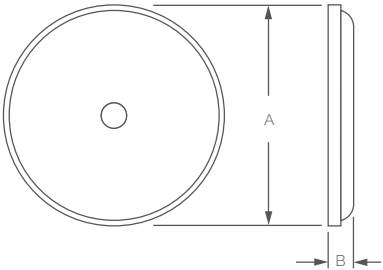


PRODUCT NUMBER	A	B	C	D
2224 Pull	4"	4-1/2"	1-5/8"	1/2"
2226 Pull	6"	6-1/2"	1-5/8"	1/2"
2228 Pull	8"	8-1/2"	1-5/8"	1/2"
2232 Pull	12"	12-1/2"	1-5/8"	1/2"
2238 Pull	18"	18-1/2"	1-5/8"	1/2"
2242 Appliance Pull	12"	12-7/8"	2-7/32"	7/8"
2248 Appliance Pull	18"	18-7/8"	2-7/32"	7/8"

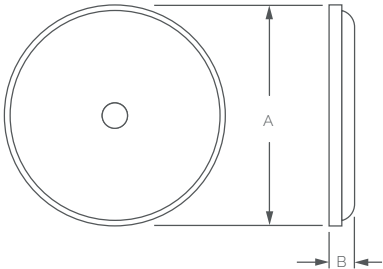
### REMEMBER

Appliance pulls are available as B-T-B and single sided applications.

BACKPLATES

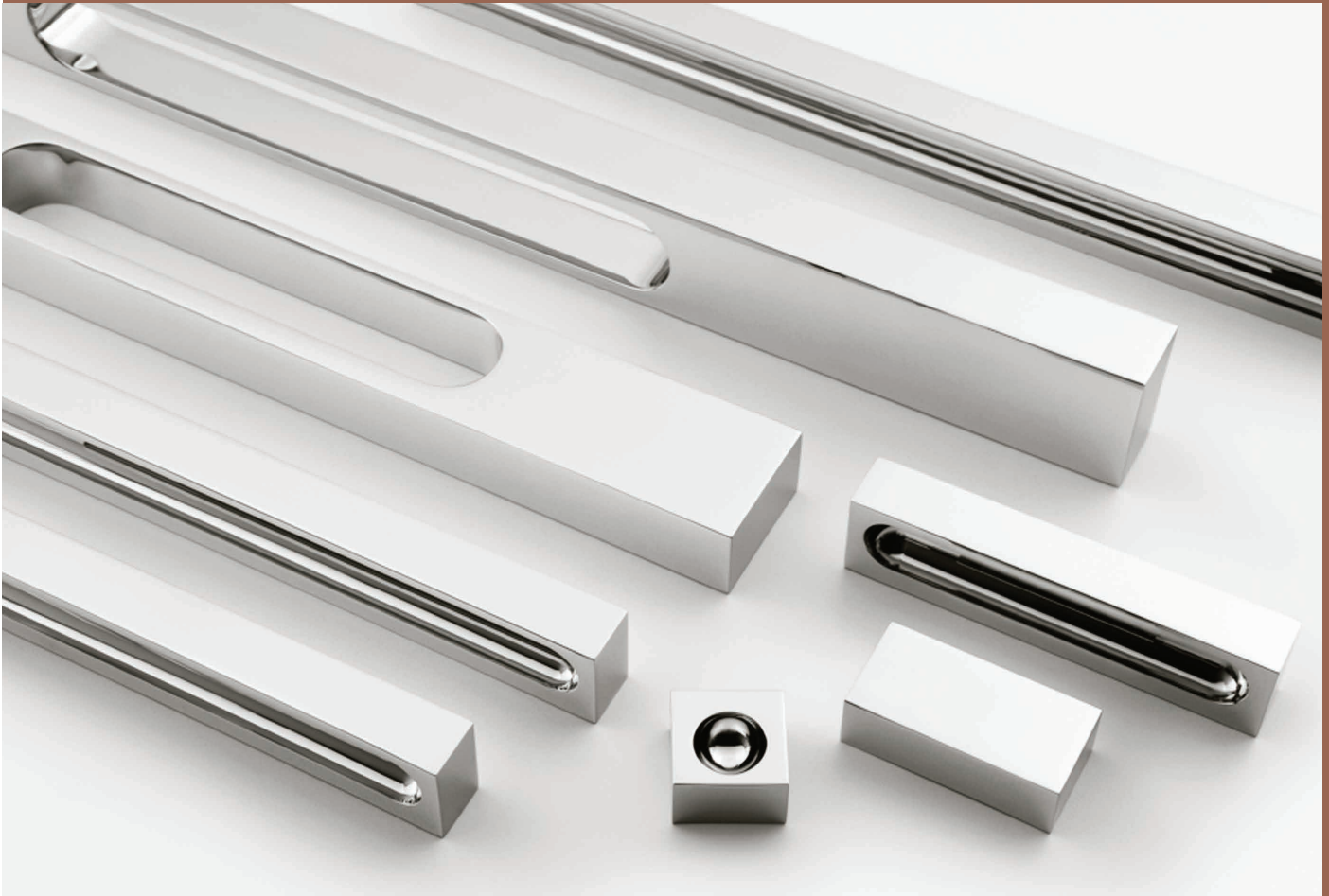


PRODUCT NUMBER	A	B
2213 Backplate	1-3/8"	3/16"

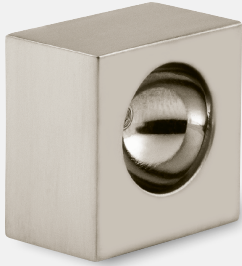


PRODUCT NUMBER	A	B
2215 Backplate	1-5/8"	3/16"

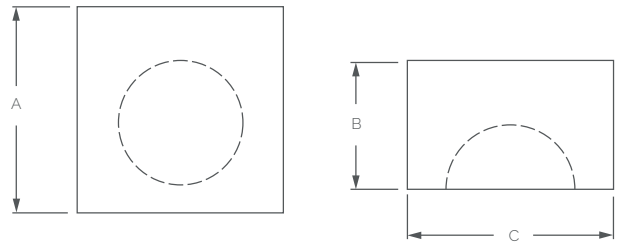




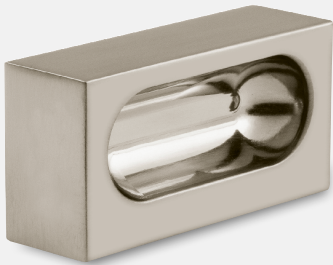
SURFACE PULLS



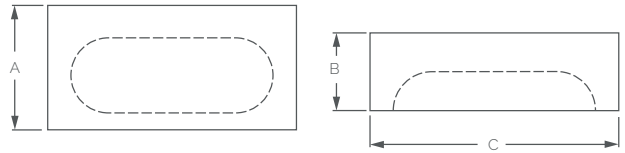
3102



PRODUCT NUMBER	A	B	C
3102 Surface Pull	1"	5/8"	1"

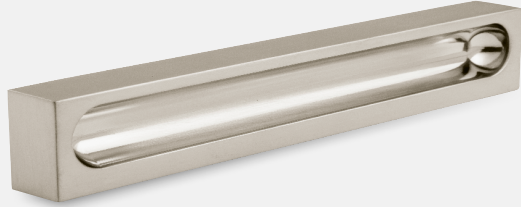


3106

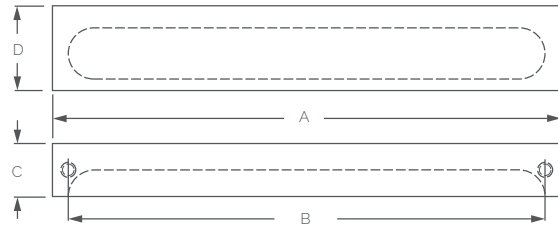


PRODUCT NUMBER	A	B	C
3106 Surface Pull	1"	5/8"	2"

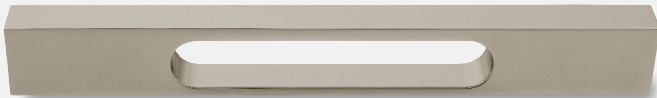
## SURFACE PULLS



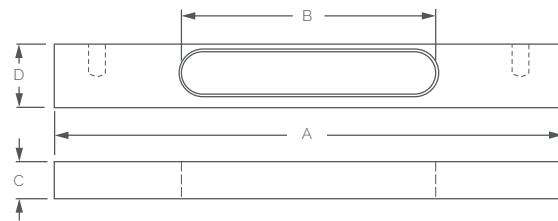
3116



PRODUCT NUMBER	A	B	C	D
3114 Surface Pull	4"	3-5/8"	5/8"	1"
3116 Surface Pull	6"	5-5/8"	5/8"	1"
3118 Surface Pull	8"	7-5/8"	5/8"	1"
3119 Surface Pull	12"	11-5/8"	5/8"	1"
3120 Surface Pull	18"	17-5/8"	5/8"	1"



3121



PRODUCT NUMBER	A	B	C	D
3121 Surface Appliance Pull	12"	6"	7/8"	1-1/2"
3122 Surface Appliance Pull	18"	8"	7/8"	1-1/2"
3124 Surface Appliance Pull	24"	8"	7/8"	1-1/2"
3130 Surface Appliance Pull	30"	10"	7/8"	1-1/2"
3136 Surface Appliance Pull	36"	12"	7/8"	1-1/2"

### REMEMBER

Appliance pulls are available as B-T-B and single sided applications.



RIDGE

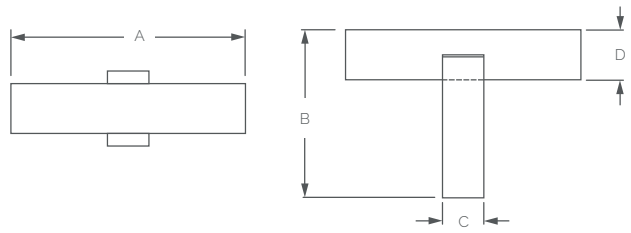


RIDGE

## CABINET KNOBS & PULLS



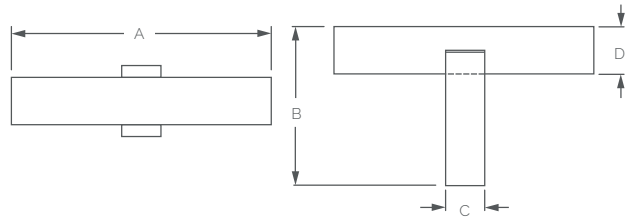
2706



PRODUCT NUMBER	A	B	C	D
2706 T Knob	2"	1-11/16"	3/8"	1/2"



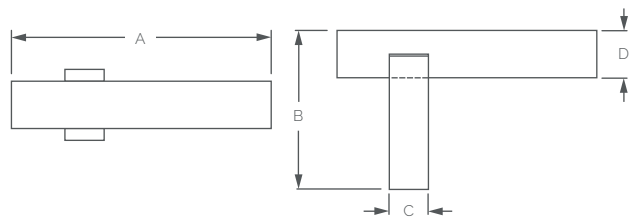
2708



PRODUCT NUMBER	A	B	C	D
2708 T Pull	3-1/8"	1-11/16"	3/8"	1/2"



2710

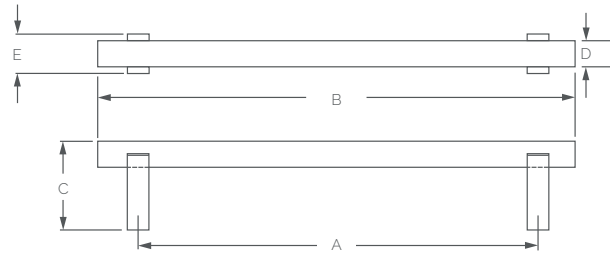


PRODUCT NUMBER	A	B	C	D
2710 L Pull	3-1/8"	1-11/16"	3/8"	1/2"

AVAILABLE IN ALL BRASS FINISHES

RIDGE

## CABINET PULLS



PRODUCT NUMBER	A	B	C	D	E
2714 Pull	4"	5-1/8"	1-11/16"	1/2"	3/4"
2716 Pull	6"	7-1/8"	1-11/16"	1/2"	3/4"
2718 Pull	8"	9-1/8"	1-11/16"	1/2"	3/4"
2722 Pull	12"	13-1/8"	1-11/16"	1/2"	3/4"
2728 Pull	18"	19-1/8"	1-11/16"	1/2"	3/4"
2732 Appliance Pull	12"	14-5/8"	2-3/4"	7/8"	1-1/4"
2738 Appliance Pull	18"	20-5/8"	2-3/4"	7/8"	1-1/4"
2744 Appliance Pull	24"	26-5/8"	2-3/4"	7/8"	1-1/4"
2750 Appliance Pull	30"	32-5/8"	2-3/4"	7/8"	1-1/4"
2756 Appliance Pull	36"	38-5/8"	2-3/4"	7/8"	1-1/4"

### REMEMBER

Custom c-c sizes available.

Split finishes available.

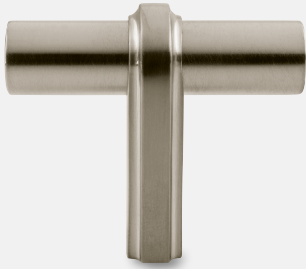
Appliance pulls are available as B-T-B and single sided applications.



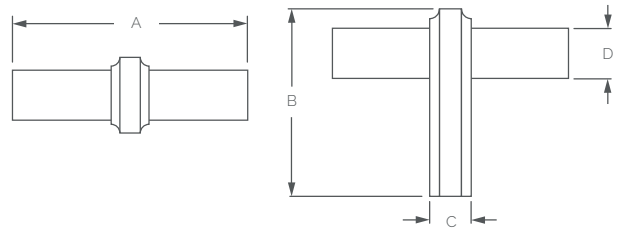
SUMMIT

SUMMIT

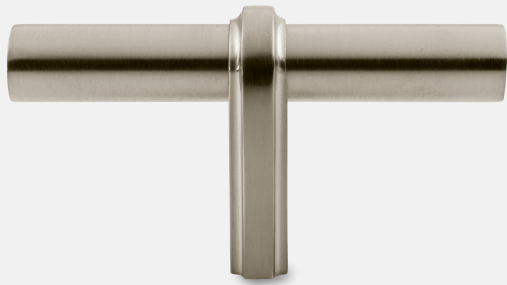
## CABINET KNOBS & PULLS



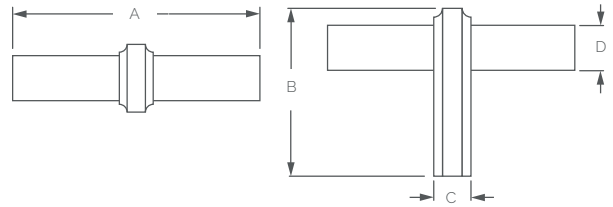
2806



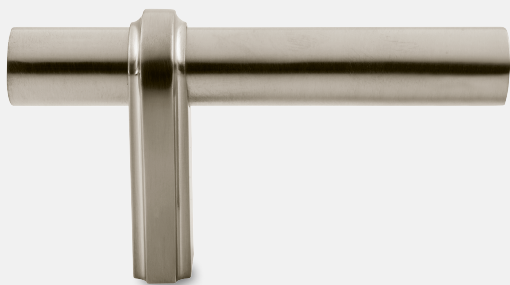
PRODUCT NUMBER	A	B	C	D
2806 T Knob	2"	1-11/16"	3/8"	1/2"



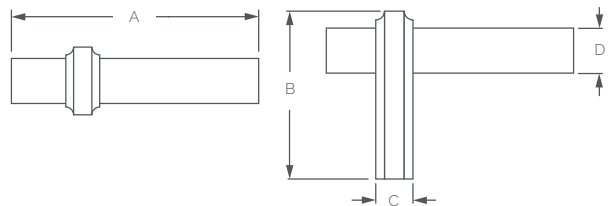
2808



PRODUCT NUMBER	A	B	C	D
2808 T Pull	3-1/8"	1-11/16"	3/8"	1/2"



2810

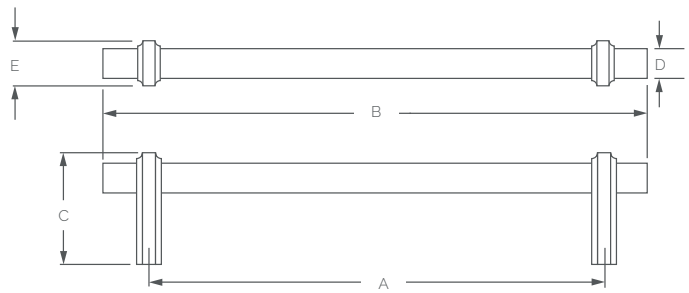


PRODUCT NUMBER	A	B	C	D
2810 L Pull	3-1/8"	1-11/16"	3/8"	1/2"

AVAILABLE IN ALL BRASS FINISHES



## CABINET PULLS



PRODUCT NUMBER	A	B	C	D	E
<b>2814</b> Pull	4"	5-1/8"	1-11/16"	1/2"	3/4"
<b>2816</b> Pull	6"	7-1/8"	1-11/16"	1/2"	3/4"
<b>2818</b> Pull	8"	9-1/8"	1-11/16"	1/2"	3/4"
<b>2822</b> Pull	12"	13-1/8"	1-11/16"	1/2"	3/4"
<b>2828</b> Pull	18"	19-1/8"	1-11/16"	1/2"	3/4"
<b>2832</b> Appliance Pull	12"	14-5/8"	2-3/4"	7/8"	1-1/4"
<b>2838</b> Appliance Pull	18"	20-5/8"	2-3/4"	7/8"	1-1/4"
<b>2844</b> Appliance Pull	24"	26-5/8"	2-3/4"	7/8"	1-1/4"
<b>2850</b> Appliance Pull	30"	32-5/8"	2-3/4"	7/8"	1-1/4"
<b>2856</b> Appliance Pull	36"	38-5/8"	2-3/4"	7/8"	1-1/4"

### REMEMBER

Custom c-c sizes available.

Split finishes available.

Appliance pulls are available as B-T-B and single sided applications.