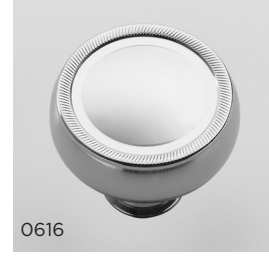
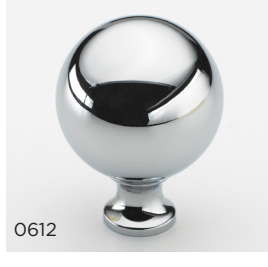
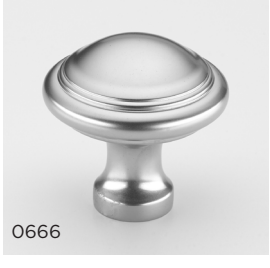
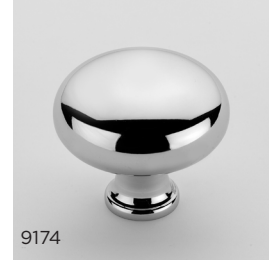


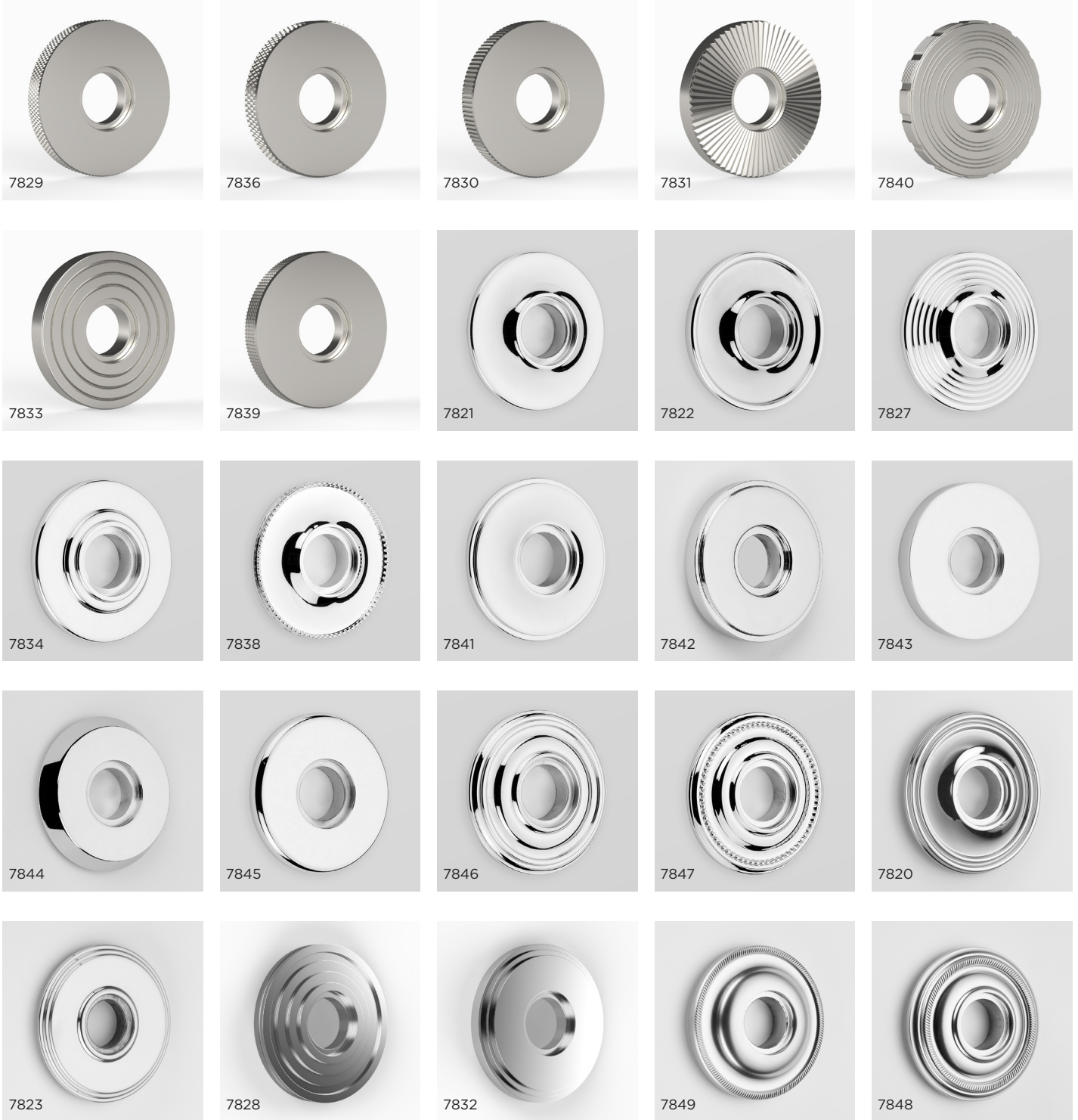


# GARMENT ROD KNOBS





# GARMENT ROD ROSETTES



## GARMENT RODS



Available in two hanging lengths (L) - 150mm (6") and 200mm (8").

Makers of fine English hardware



# GARMENT ROD FINISHES



Ebony Bronze (EBB)



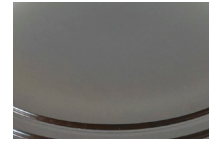
Dark Matt Bronze (DMB)



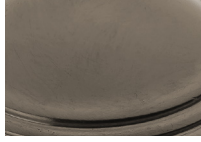
Chestnut Bronze (CHB)



Hand Burnished Brass (HBB)



Imperial Brass Lacquered (IB)



Imperial Brass (IBU)



Antique Brass Lacquered (AB)



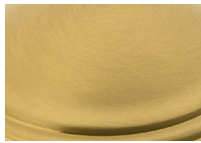
Antique Brass (ABU)



Polished Brass Lacquered (PB)



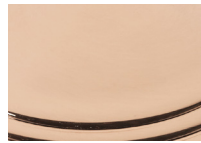
Polished Brass (PBU)



Satin Brass Lacquered (SB)



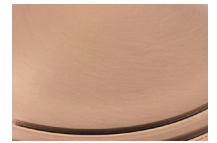
Satin Brass (SBU)



Polished Copper Lacquered (PK)



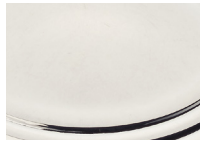
Polished Copper (PKU)



Satin Copper Lacquered (SK)



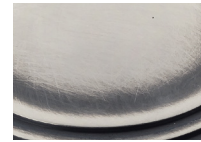
Satin Copper (SKU)



Polished Silver (SP)



Butlers Silver (BS)



Antique Silver (AS)



Hand Burnished Nickel (HBN)



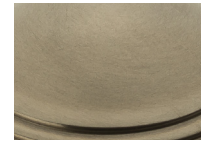
Satin Nickel (SN)



Polished Nickel (PN)



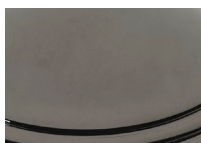
Pearl Nickel (PRL)



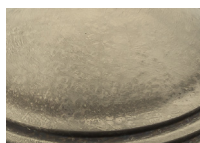
Satin Nickel Bronzed (SNB)



Matt Black Nickel (MBN)



Polished Black Nickel (PBN)



Antique Nickel (AN)



Antique Nickel Distressed (AND)



Polished Chrome (PC)



Satin Chrome (SC)



Pearl Chrome (PRC)



Matt Black Chrome (MBC)



Rose Gold (GRS)



Hand Burnished Bronze (HBG)



Polished Solid Bronze (PGU)



Satin Solid Bronze (SGU)



Polished Solid Bronze Antiqued (PGA)



Satin Solid Bronze Antiqued (SGA)



Rustic Solid Bronze (RG)



Rustic Solid Bronze Dark (RGD)

Please note: colour and texture variation is inherent in the creation of all our hand finished patinas and finishes, product appearances may vary to the images shown. Actual swatch samples are available upon request.