



Schaub

ASSA ABLOY

SIGNATURE  
& SYMPHONY

ASSA ABLOY, the global leader  
in door opening solutions

SIGNATURE  
RUSTIC



Mountain..... 8  
 Perla & Chemin De Fer..... 10  
 Artifex ..... 11  
 Vinci ..... 13  
 Ovale ..... 14  
 Siena ..... 15  
 Martello..... 16  
 Viento ..... 17

For image sources and design credits,  
see page 115.

SIGNATURE  
CONTEMPORARY



San Marco ..... 20  
 Heathrow ..... 21  
 Foncé ..... 22  
 Lumiere ..... 23  
 City Lights ..... 24  
 Positano ..... 26  
 Ice ..... 28  
 Tallmadge..... 29  
 Mosaic ..... 30  
 Skyevale ..... 31  
 Finestrino ..... 33  
 Armadio ..... 34  
 Italian Contemporary..... 35  
 Tenor ..... 36  
 Aria ..... 37  
 Profile..... 38  
 Regatta ..... 39  
 Sorrento..... 41  
 Classico & Wave..... 42  
 Stainless Steel ..... 43

SIGNATURE

# TRANSITIONAL



Lumiere Transitional .....	46
Haniburton.....	47
Northport .....	49
Menlo Park.....	52
Empire.....	54
Steamworks.....	55

SIGNATURE

# TRADITIONAL



Cabriole .....	58
Atherton .....	59
Traditional .....	60
Country .....	63
Colonial .....	64
French Farm.....	65
Stargaze.....	66
Kingsway .....	67
Meridian.....	68
Montcalm.....	69
Versailles .....	70
Arcadia.....	71
Casual Elegance .....	72
Corinthian .....	73
Firenza .....	74
Hinges.....	75

# SYMPHONY



Crescendo .....	78
Interlude .....	79
Cadence .....	80
Arioso .....	81
Fair Isle .....	82
Avalon Bay .....	83
Imperial Shell .....	84
Mother of Pearl .....	85
Tiger Penshell .....	86
Chalice & Eastlake .....	87
Cantata .....	88
French Court .....	90
Swans .....	93
Sunburst .....	94
Sunflower .....	95
Sonata .....	96
Heirloom Treasures .....	97
Wine Themes .....	98
Nature .....	99
Index .....	100



# EVERY PIECE IN OUR SYMPHONY COLLECTION IS RICH IN DESIGN AND DETAIL TO MAKE YOUR HOME TRULY STAND APART.

## **MOTHER-OF-PEARL**

THE SMOOTH LINING OF THE PEARL OYSTER GIVES THIS MATERIAL ITS LUSTROUS SHEEN. ITS SILKY, ELEGANT APPEARANCE IS COVETED BY ALL CULTURES AROUND THE WORLD AND IS NOW AVAILABLE TO YOU IN OUR STUNNING RANGE OF SYMPHONY PIECES.

## **TIGER PENSHELL**

SIMILAR TO ITS COUSIN THE OYSTER, TIGER PENSHELL IS THE BEAUTIFUL INTERIOR OF LARGE, SALT WATER CLAMS FOUND JUST OFF OF THE COAST IN THE BALMY, SHALLOW WATERS SURROUNDING THE PHILIPPINE ISLANDS. WITH VARIEGATED MARBLING, FROM LIGHT CREAM TO BRUNETTE, NO ONE PIECE IS EVER ALIKE, MAKING EACH AND EVERY ONE OF YOUR CABINETS ENTIRELY UNIQUE.

## **IMPERIAL SHELL**

ALSO KNOWN AS PAUA SHELL, THIS ASTONISHINGLY ELEGANT SUBSTANCE RADIATES ALL THE COLORS OF THE RAINBOW. MATCHLESS IN APPEARANCE, ITS IRIDESCENT SHINE SPARKLES WITH THE WELCOMING WARMTH OF THE SOUTH PACIFIC.

## **LOST WAX SOLID BRASS**

SOMETIMES CALLED "INVESTMENT CASTING", THIS IS THE METHOD THAT THE WORLD'S FINEST JEWELERS HAVE BEEN USING FOR CENTURIES TO CREATE SOME OF THEIR MOST ELABORATELY DETAILED PIECES OF JEWELRY. SUPREMELY SKILLED ARTISANS HAND MAKE EACH PIECE, GIVING EACH THEIR OWN UNIQUE PERSONALITY.





On This Page  
Mountain cabinet hardware in Antique Bronze

# RUSTIC



Rustic style honors the look, materials, and techniques of craftsmanship from bygone eras and applies them to a range of design aesthetics. Weathered profiles combined with living finishes, give Rustic designs a character all their own.

# MOUNTAIN

**CAST BRONZE**  
Unlacquered Living Finish



AS-Antique Silver ■ AZ-Antique Bronze ■ IN-Italian Nickel  
NB-Natural Bronze ■ VI-Verde Imperiale



# MOUNTAIN



**CAST BRONZE**  
Unlacquered Living Finish



AS-Antique Silver ■ AZ-Antique Bronze ■ IN-Italian Nickel  
NB-Natural Bronze ■ VI-Verde Imperiale

# PERLA & CHEMIN DE FER

**BRITANNIUM**

Unlacquered Living Finish



137-N  
64 mm cc

135-N  
1-3/8"

133-N  
1-3/4"

136-N  
128 mm cc

134-N  
1-3/8"

140-N  
12" cc  
APPLIANCE PULL

139-N  
12" cc

143-300-N  
300 mm cc  
APPLIANCE PULL

141-384-N  
384 mm cc

144-N  
1-3/4"

141-64-N  
64 mm cc

141-224-N  
224 mm cc

141-128-N  
128 mm cc

141-96-N  
96 mm cc

# ARTIFEX



**BRITANNIUM**  
Unlacquered Living Finish



DP-Dark Pewter ■ N-Natural Britannium

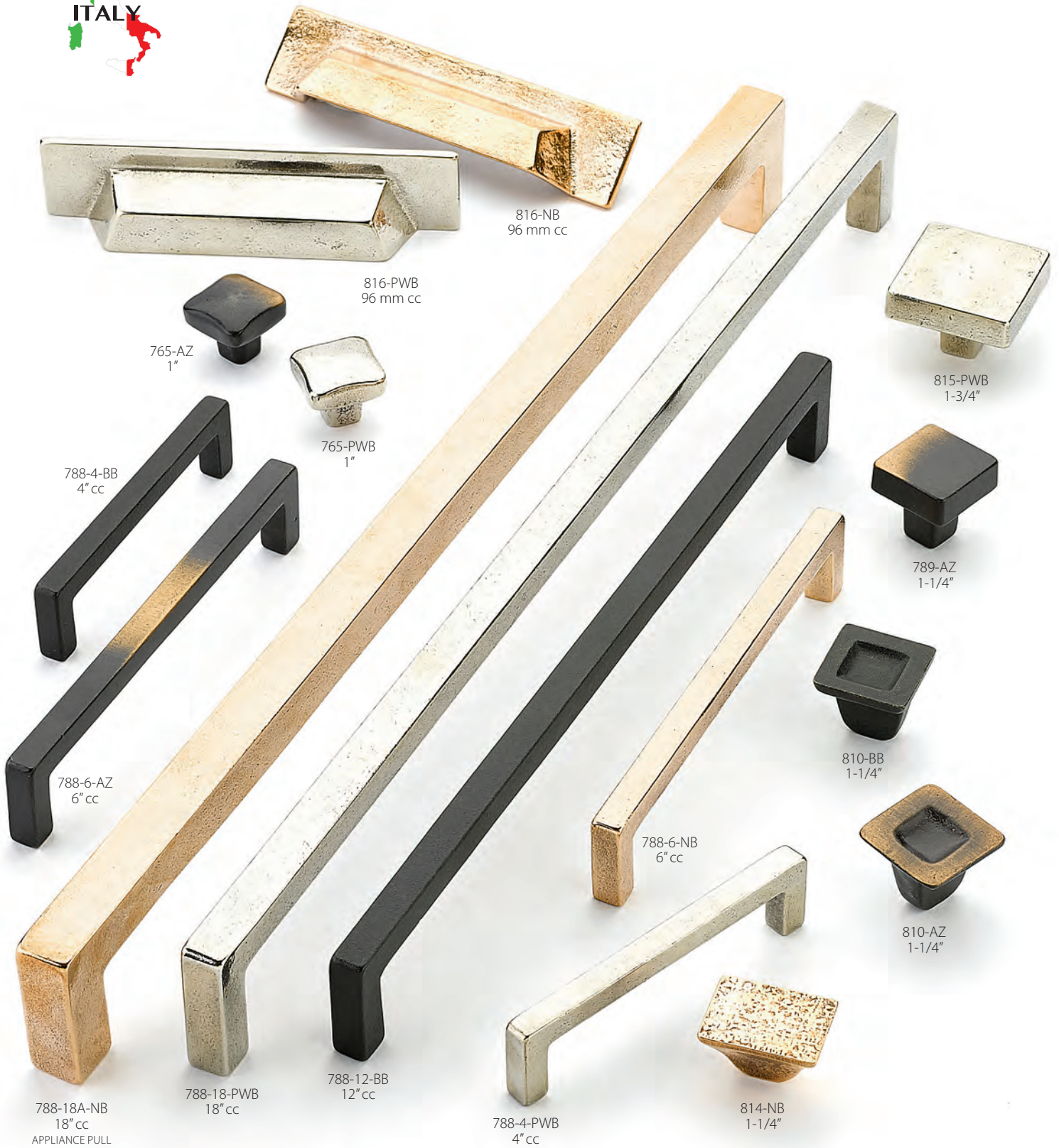


On This Page  
Vinci cabinet hardware in Polished White Bronze

# VINCI



**CAST BRONZE**  
Unlacquered Living Finish



AZ-Antique Bronze ■ BB-Black Bronze ■ NB-Natural Bronze ■ PWB-Polished White Bronze

# OVALE

**CAST BRONZE**  
Unlacquered Living Finish



# SIENA



# MARTELLINO

## BRITANNIUM

Unlacquered Living Finish



177-N  
160 mm cc

179-N  
305 mm cc

178-N  
224 mm cc

176-N  
128 mm cc

172-N  
1-3/4" x 1-1/8"

170-N  
1-3/4"

171-N  
1-1/2" x 1-1/2"

175-N  
160 mm cc

174-N  
128 mm cc

173-N  
96 mm cc

### N-Natural Britannium

Items in this design group are not intended for use as appliance pulls.



# VIENTO



**BRITANNIUM**  
Unlacquered Living Finish



## N-Natural Britannium

Items in this design group are not intended for use as appliance pulls.



On This Page  
Lumiere cabinet hardware in Satin Brass

# CONTEMPORARY



Contemporary designs pay homage to modern art and architecture in their unadorned styling. Sleek and simple lines in often-bold colors and materials complement and elevate all design themes and projects.

# SAN MARCO



455-PN  
160 mm cc

455-VS  
160 mm cc

456-15  
320 mm cc

456-SB  
320 mm cc

454-26  
96 mm cc

454-MB  
96 mm cc

15-Satin Nickel ■ 26-Polished Chrome ■ MB-Matte Black  
PN-Polished Nickel ■ SB-Satin Brass ■ VS-Vintage Steel

# HEATHROW

SOLID  
BRASS



26-Polished Chrome ■ BN-Brushed Nickel ■ MB-Matte Black  
 PN-Polished Nickel ■ SSB-Signature Satin Brass

# FONCÉ

BRASS  
SOLID



ALL ITEMS ARE NON-ADJUSTABLE

MB-Matte Black ■ MB/PN-Matte Black Bar/Polished Nickel Stem  
MB/SB-Matte Black Bar/Satin Brass Stem ■ PN-Polished Nickel ■ SB-Satin Brass

# LUMIERE

**BRASS**  
ADJUSTABLE ACRYLIC



10B-Oil Rubbed Bronze ■ 15-Satin Nickel ■ 26-Polished Chrome  
BRG-Brushed Rose Gold ■ MB-Matte Black ■ PN-Polished Nickel ■ SB-Satin Brass

# CITY LIGHTS

BRASS  
GLASS



10B-Oil Rubbed Bronze ■ 15-Satin Nickel ■ 26-Polished Chrome  
PN-Polished Nickel ■ PRG-Polished Rose Gold ■ SB-Satin Brass



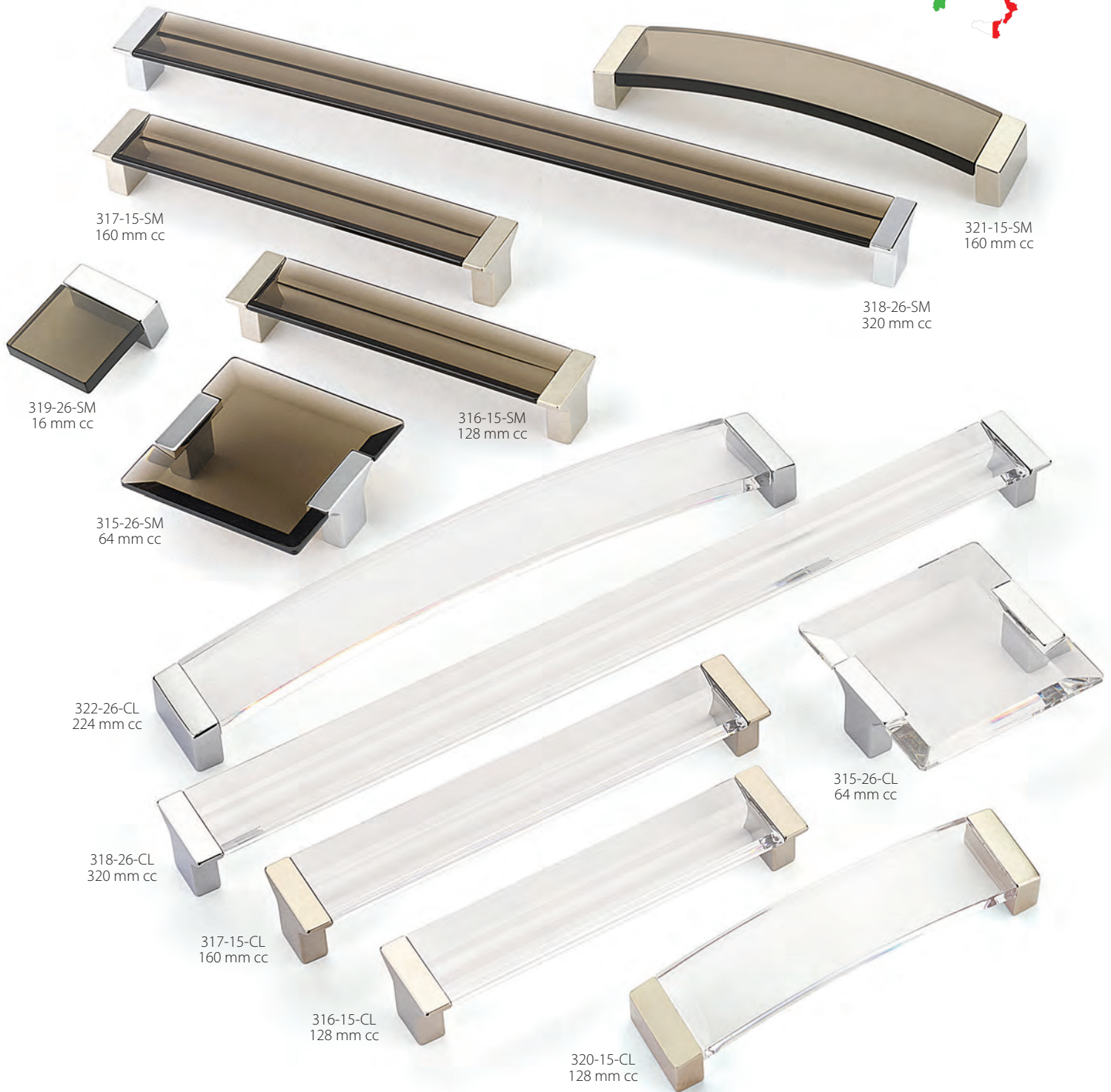
# CITY LIGHTS

BRASS  
GLASS



10B-Oil Rubbed Bronze ■ 15-Satin Nickel ■ 26-Polished Chrome  
PN-Polished Nickel ■ SB-Satin Brass

# POSITANO



317-15-SM  
160 mm cc

321-15-SM  
160 mm cc

318-26-SM  
320 mm cc

319-26-SM  
16 mm cc

316-15-SM  
128 mm cc

315-26-SM  
64 mm cc

322-26-CL  
224 mm cc

315-26-CL  
64 mm cc

318-26-CL  
320 mm cc

317-15-CL  
160 mm cc

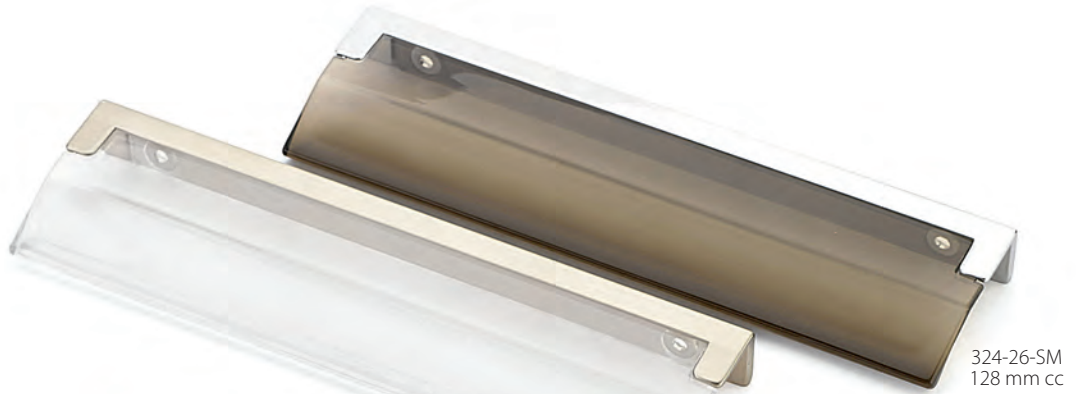
316-15-CL  
128 mm cc

320-15-CL  
128 mm cc

15-CL-Satin Nickel Clear ■ 15-SM-Satin Nickel Smoke  
26-CL-Polished Chrome Clear ■ 26-SM-Polished Chrome Smoke

Items in this design group are not intended for use as appliance pulls.

# POSITANO



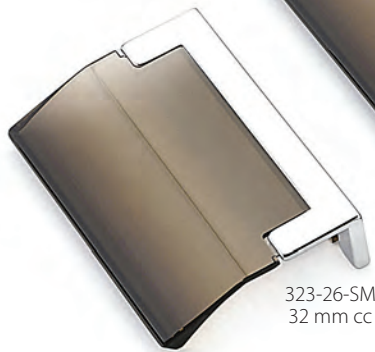
324-15-CL  
128 mm cc

324-26-SM  
128 mm cc



324-15-SM  
128 mm cc

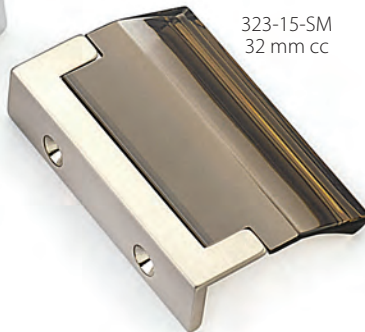
324-26-CL  
128 mm cc



323-26-SM  
32 mm cc



323-26-CL  
32 mm cc



323-15-SM  
32 mm cc



323-15-CL  
32 mm cc

15-CL-Satin Nickel Clear ■ 15-SM-Satin Nickel Smoke  
26-CL-Polished Chrome Clear ■ 26-SM-Polished Chrome Smoke



*We recommend Positano edge pulls be installed on flat panel cabinets with a maximum thickness of 3/4" in order to achieve proper clearance. Edge pulls attach from inside drawer or cabinet face.*

# ICE



COO-Confetti Orange ■ COT-Confetti Turquoise ■ CWG-Confetti White Grey  
 GBP-Green Blue Pebbles ■ IVS-Ivory Silk ■ PAQ-Pearl Aqua ■ PBL-Pearl Blue ■ PCL-Pearl Clear  
 SBP-Sable Pebbles ■ SCS-Scarlet Silk ■ SPS-Sapphire Silk ■ WLP-White Lace Pebbles

# TALLMADGE



Finish and Glass combinations:

Black Nickel (BN) Finish: Light Bronze (LB), Lemon Ice (LM) or Rouge (RG)  
 Polished Nickel (PN) Finish: Silver Grey (GY), Turquoise (TQ) or White (WH)  
 Satin Nickel (SN) Finish: Black (BL), Steel Blue (SB) or White (WH)

# MOSAIC



15-Satin Nickel ■ 26-Polished Chrome ■ FAB-French Antique Bronze

Items in this design group are not intended for use as appliance pulls.

# SKYEVALE



300-MSV  
1/2"



299-BC  
1/2"

299-15  
1/2"

305-BC  
128/160 mm cc



302-MSV  
128/160 mm cc



306-15  
288/320 mm cc



305-MSV  
128/160 mm cc

303-BC  
288/320 mm cc

302-15  
128/160 mm cc



302-26  
128/160 mm cc

304-BC  
32 mm cc



301-MSV  
32 mm cc



305-MBZ  
128/160 mm cc



304-MBZ  
32 mm cc

301-26  
32 mm cc



301-15  
32 mm cc

15-Satin Nickel ■ 26-Polished Chrome ■ BC-Black Chrome  
MBZ-Milano Bronze ■ MSV-Milano Silver

Items in this design group are not intended for use as appliance pulls.



On This Page  
Finestrino cabinet hardware in Matte Black



# FINESTRINO



450-BRBZ  
32 mm cc



451-MB  
160 mm cc



441-MB  
64 mm cc



440-15  
32 mm cc



446-BRBZ  
192 mm cc



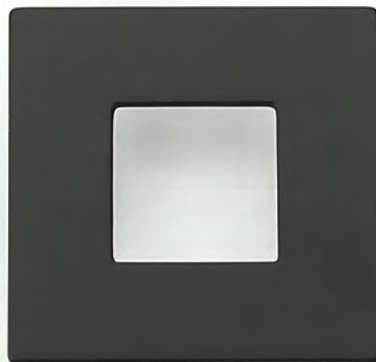
442-M26  
160 mm cc



445-M26  
128 mm cc



444-15  
96 mm cc



443-MB  
64 mm cc



441-26  
64 mm cc

15-Satin Nickel ■ 26-Polished Chrome ■ BRBZ-Burnished Bronze  
M26-Matte Chrome ■ MB-Matte Black

# ARMADIO



15-Satin Nickel ■ 26-Polished Chrome ■ BRBZ-Burnished Bronze ■ MB-Matte Black

Items in this design group are not intended for use as appliance pulls.

# ITALIAN CONTEMPORARY



SOLID BRASS



501-LTBZ  
4" cc

502-LTBZ  
6" cc

513A-26  
13-3/4" cc  
APPLIANCE PULL

502-26  
6" cc

501-26  
4" cc

501-15  
4" cc

502-15  
6" cc

512-LTBZ  
6" cc

511-LTBZ  
4" cc

511-26  
4" cc

512-26  
6" cc

512-15  
6" cc

511-15  
4" cc

503A-15  
13-3/4" cc  
APPLIANCE PULL

513A-LTBZ  
13-3/4" cc  
APPLIANCE PULL

15-Satin Nickel ■ 26-Polished Chrome ■ LTBZ-Light Bronze

# TENOR



15-Satin Nickel ■ ES/15-Espresso Brown/Satin Nickel  
ES/26-Espresso Brown/Polished Chrome

Items in this design group are not intended for use as appliance pulls.

# ARIA



242-15  
160/192 mm cc



242-MB  
160/192 mm cc



242-M26  
160/192 mm cc



241-MB  
96/128 mm cc



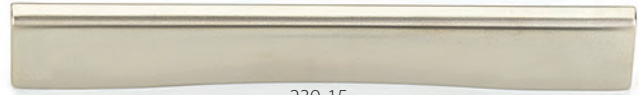
239-M26  
96/128 mm cc



241-M26  
96/128 mm cc



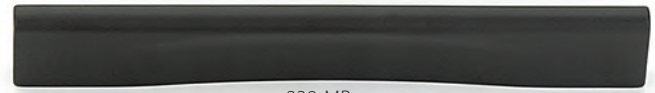
239-15  
96/128 mm cc



241-15  
96/128 mm cc



239-MB  
96/128 mm cc



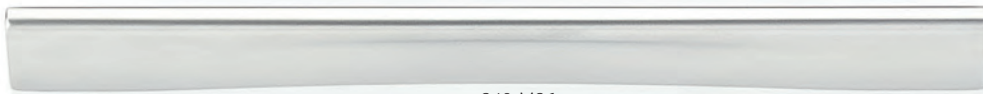
240-15  
160/192 mm cc



240-MB  
160/192 mm cc



240-M26  
160/192 mm cc



# PROFILE



15-Satin Nickel ■ 26-Polished Chrome ■ M26-Matte Chrome ■ MB-Matte Black

Items in this design group are not intended for use as appliance pulls.

# REGATTA



15-Satin Nickel ■ 26-Polished Chrome ■ MB/15-Matte Black/Satin Nickel  
MB/26-Matte Black/Polished Chrome

Items in this design group are not intended for use as appliance pulls.



On This Page  
Sorrento cabinet hardware in Matte Black



# SORRENTO



15-Satin Nickel ■ 26-Polished Chrome ■ BC-Black Chrome  
MB-Matte Black ■ MBZ-Milano Bronze ■ MSV-Milano Silver

Items in this design group are not intended for use as appliance pulls.

# CLASSICO & WAVE



15S-Satin Nickel ■ 26-Polished Chrome ■ M26-Matte Chrome ■ MB-Matte Black

Items in this design group are not intended for use as appliance pulls.

# STAINLESS STEEL



## Solid Stainless Steel

Items in this design group are not intended for use as appliance pulls.

### PART NUMBER, SIZE & DESCRIPTION

<b>SS 010</b>	Whistle Knob, 20 mm Diameter	<b>SS 288</b>	Bar Pull, 288 mm cc (348 mm overall, 13-3/4")	<b>SS BOW 096</b>	Bow Pull, 96 mm cc (115 mm overall, 4-1/2")
<b>SS 012</b>	Round Knob, 30 mm Diameter	<b>SS 384</b>	Bar Pull, 384 mm cc (444 mm overall, 17-1/2")	<b>SS BOW 128</b>	Bow Pull, 128 mm cc (156 mm overall, 6-1/8")
<b>SS 014</b>	"T" Knob, 35 mm x 35 mm	<b>SS 448</b>	Bar Pull, 448 mm cc (508 mm overall, 20")	<b>SS BOW 224</b>	Bow Pull, 224 mm cc (263 mm overall, 10-1/3")
<b>SS 096</b>	Bar Pull, 96 mm cc (156 mm overall, 6-1/8")	<b>SS 544</b>	Bar Pull, 544 mm cc (604 mm overall, 23-3/4")	<b>SS BOW 288</b>	Bow Pull, 288 mm cc (340 mm overall, 13-2/5")
<b>SS 128</b>	Bar Pull, 128 mm cc (188 mm overall, 7-3/8")	<b>SS 640</b>	Bar Pull, 640 mm cc (700 mm overall, 27-1/2")		
<b>SS 160</b>	Bar Pull, 160 mm cc (220 mm overall, 8-5/8")	<b>SS 736</b>	Bar Pull, 736 mm cc (796 mm overall, 31-3/8")		
<b>SS 224</b>	Bar Pull, 224 mm cc (284 mm overall, 11-1/8")	<b>SS 832</b>	Bar Pull, 832 mm cc (892 mm overall, 35-1/8")		



**On This Page**  
Northport cabinet hardware in Signature Satin Brass

# TRANSITIONAL



Transitional designs combine the best of both traditional and contemporary styles. Clean lines and rounded profiles help to balance beveled edges, while modern finishes provide an elegant and subtle look.

# LUMIERE TRANSITIONAL

**BRASS**  
ADJUSTABLE ACRYLIC



03-Polished Brass ■ 15-Satin Nickel ■ 26-Polished Chrome  
PN-Polished Nickel ■ PRG-Polished Rose Gold ■ SB-Satin Brass

# HANIBURTON

SOLID  
BRASS



15-Satin Nickel ■ 26-Polished Chrome ■ MB-Matte Black  
PN-Polished Nickel ■ SB-Satin Brass ■ UNBR-Unlacquered Brass



**On This Page**  
Northport cabinet hardware in Signature Satin Brass



# NORTHPORT



15-Satin Nickel ■ 26-Polished Chrome ■ ABZ-Ancient Bronze ■ BBZ-Brushed Bronze  
BN-Brushed Nickel ■ MB-Matte Black ■ PN-Polished Nickel ■ SSB-Signature Satin Brass

# NORTHPORT



15-Satin Nickel ■ 26-Polished Chrome ■ ABZ-Ancient Bronze ■ BBZ-Brushed Bronze  
BN-Brushed Nickel ■ MB-Matte Black ■ PN-Polished Nickel ■ SSB-Signature Satin Brass



On This Page  
Northport cabinet hardware in Signature Satin Brass

# MENLO PARK



15-Satin Nickel ■ 26-Polished Chrome ■ ABZ-Ancient Bronze  
 BN-Brushed Nickel ■ MB-Matte Black ■ PN-Polished Nickel ■ SSB-Signature Satin Brass

# MENLO PARK



15-Satin Nickel ■ 26-Polished Chrome ■ ABZ-Ancient Bronze  
 BN-Brushed Nickel ■ MB-Matte Black ■ PN-Polished Nickel ■ SSB-Signature Satin Brass

# EMPIRE



15-Satin Nickel ■ 26-Polished Chrome ■ ABZ-Ancient Bronze ■ AN-Antique Nickel  
 BBZ-Brushed Bronze ■ BN-Brushed Nickel ■ EBZ-Empire Bronze ■ MB-Matte Black  
 PN-Polished Nickel ■ SSB-Signature Satin Brass

# STEAMWORKS



15-Satin Nickel ■ BBZ-Brushed Bronze  
DP/C-Distressed Pewter/Copper ■ EBZ-Empire Bronze



**On This Page**  
Country cabinet hardware in Polished Nickel



# TRADITIONAL



Traditional designs include elegant accents and familiar, timeless shapes. Elements of classic European architecture emerge in Traditional design, including adorned engravings, antique silhouettes, rich metallic hues and baroque textures.

# CABRIOLE



AN-Antique Nickel ■ BBZ-Brushed Bronze ■ EBZ-Empire Bronze ■ PN-Polished Nickel

# ATHERTON

SOLID  
BRASS



574-26  
3" cc



575-PN  
3" cc



571-26  
1-1/4"



570-PN  
1-1/4"



579-26  
4" cc



577-SB  
8" cc



576-10B  
4" cc



580-10B  
8" cc



579-PN  
4" cc



574-SB  
3" cc



572-26  
1-1/4"



573-10B  
3" cc



570-SB  
1-1/4"



578-PN  
15" cc  
APPLIANCE PULL



581-10B  
15" cc  
APPLIANCE PULL



578-SB  
15" cc  
APPLIANCE PULL



577-26  
8" cc



572-10B  
1-1/4"

# TRADITIONAL

SOLID  
BRASS



03-Polished Brass ■ 10B-Oil Rubbed Bronze ■ AB-Antique Brass  
ALB-Antique Light Brass ■ DBZ-Distressed Bronze ■ MIBZ-Michelangelo Bronze

# TRADITIONAL

SOLID  
BRASS



15-Satin Nickel ■ 26-Polished Chrome ■ AN-Antique Nickel  
DN-Distressed Nickel ■ FB-Flat Black ■ PN-Polished Nickel



On This Page  
Country cabinet hardware in Polished Nickel

# COUNTRY

SOLID  
BRASS



10B-Oil Rubbed Bronze ■ 15-Satin Nickel ■ 26-Polished Chrome ■ AN-Antique Nickel  
AUB-Aurora Bronze ■ FB-Flat Black ■ PN-Polished Nickel ■ SB-Satin Brass

# COLONIAL

SOLID  
BRASS



10B-Oil Rubbed Bronze ■ 15-Satin Nickel ■ 26-Polished Chrome ■ AN-Antique Nickel  
AUB-Aurora Bronze ■ FB-Flat Black ■ PN-Polished Nickel ■ SB-Satin Brass



# FRENCH FARM



ABZ-Ancient Bronze ■ AN-Antique Nickel ■ EBZ-Empire Bronze

# STARGAZE

BRASS  
GLASS



03-Polished Brass ■ 15-Satin Nickel ■ BZ-Bronze ■ PN-Polished Nickel

# KINGSWAY



BRASS  
GLASS



20-PN-SG  
1-1/4"



20-ABZ-AL  
1-1/4"



21-AN-CH  
1-1/4"



21-PN-CB  
1-1/4"



20-ABZ-SC  
1-1/4"



20-PN-CW  
1-1/4"



22-PN-SG  
4" cc



22-ABZ-SC  
4" cc



21-ABZ-CL  
1-1/4"



20-PN-CB  
1-1/4"



22-AN-GS  
4" cc



21-AN-GS  
1-1/4"



21-AN-GB  
1-1/4"



20-AN-GB  
1-1/4"



22-ABZ-CL  
4" cc

Finish and Glass combinations:

Ancient Bronze (ABZ) Finish: Almond (AL), Chaparral (CL) or Scarlet (SC)

Antique Nickel (AN) Finish: Champagne (CH), Glacier Blue (GB) or Greystone (GS)

Polished Nickel (PN) Finish: Classic Black (CB), Classic White (CW) or Slate Grey (SG)

# MERIDIAN

SOLID  
BRASS



10B-Oil Rubbed Bronze ■ 15-Satin Nickel ■ ALP-Antique Light Polish  
AN-Antique Nickel ■ AUB-Aurora Bronze ■ PN-Polished Nickel

# MONTCALM

SOLID  
BRASS



10B-Oil Rubbed Bronze ■ 15-Satin Nickel ■ ALP-Antique Light Polish  
AN-Antique Nickel ■ MIBZ-Michelangelo Bronze ■ PN-Polished Nickel

# VERSAILLES

SOLID  
BRASS



752-10B  
1-1/2"



753-10B  
3" cc

754-10B  
3-1/2" cc



764-ALP  
10" cc  
APPLIANCE PULL



754-ALP  
3-1/2" cc

753-ALP  
3" cc



751-10B  
1-1/4"

761-10B  
BACKPLATE  
4-1/4" x 1"

762-10B  
96 mm cc



752-15  
1-1/2"

756-15  
BACKPLATE  
1-1/2"



751-ALP  
1-1/4"

761-ALP  
BACKPLATE  
4-1/4" x 1"

763-10B  
BACKPLATE  
96 mm cc



753-15  
3" cc

754-15  
3-1/2" cc

# ARCADIA

SOLID  
BRASS

831-ALB  
1-3/4"



832-ALB  
BACKPLATE  
4-1/4" x 7/8"



830-AN  
1-3/8"



834-ALB  
3" cc



834-AN  
3" cc



833-ALB  
96 mm cc



836-AN  
6" cc



833-ABZ  
96 mm cc

835-AN  
15" cc  
APPLIANCE PULL



836-ABZ  
6" cc



830-ABZ  
1-3/8"



832-ABZ  
BACKPLATE  
4-1/4" x 7/8"

ABZ-Ancient Bronze ■ ALB-Antique Light Brass ■ AN-Antique Nickel

# CASUAL ELEGANCE

SOLID  
BRASS



875-PN  
3" cc



875-LAN  
3" cc



873-RB  
1-3/8"



874-PN  
96 mm cc



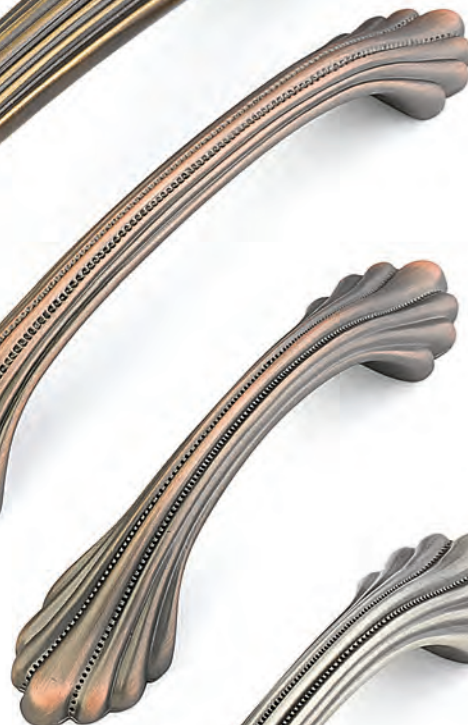
8746-PN  
6" cc



8746-RB  
6" cc



8746-MIBZ  
6" cc



874-MIBZ  
96 mm cc



873-MIBZ  
1-3/8"



873-LAN  
1-3/8"

869-RB  
15" cc  
APPLIANCE PULL



874-LAN  
96 mm cc

LAN-Light Antique Nickel ■ MIBZ-Michelangelo Bronze  
PN-Polished Nickel ■ RB-Redington Brass



# CORINTHIAN

SOLID  
BRASS



# FIRENZA

SOLID  
BRASS



284-LFBZ  
128 mm cc



284-FS  
128 mm cc



284-DFBZ  
128 mm cc



282-FS  
96 mm cc



282-DFBZ  
96 mm cc



281-FS  
96 mm cc



281-DFBZ  
96 mm cc



282-LFBZ  
96 mm cc



281-LFBZ  
96 mm cc



280-FS  
96/128 mm cc



283-DFBZ  
1-1/8"



280-DFBZ  
96/128 mm cc



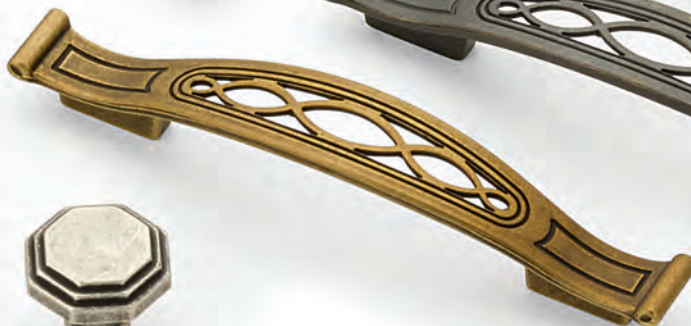
283-LFBZ  
1-1/8"



283-FS  
1-1/8"



280-LFBZ  
96/128 mm cc



# HINGES

SOLID BRASS

## MORTISE HINGES

AVAILABLE IN BALL TIP ONLY

\* Hinges available in all finishes shown, sold as eaches.



1111B-DN

1111B-DBZ

1111B-ALB

1111B-26

1111B-FB

1111B-AB

## NON-MORTISE HINGES

AVAILABLE IN BALL TIP & MINARET

\* Hinges available in all finishes shown, sold as eaches.



1100B-10B

1100B-PN

1100B-MIBZ

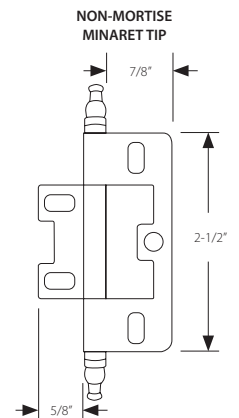
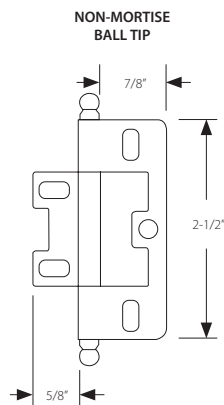
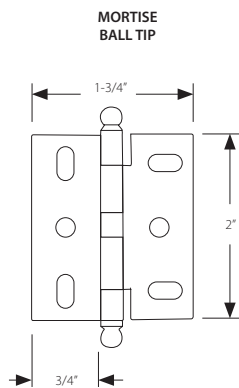
1100M-15

1100M-AN

1100M-03

## SPECIFICATIONS

HINGE THICKNESS = 1/16"





**On This Page**  
Nature cabinet hardware in Paris Brass

# SYMPHONY



Symphony Collection pieces include those made with time-honored techniques like lost wax casting, those featuring whimsical elements like animals and florals, as well as motifs crafted from some of the most stunning organic materials on Earth, including Mother of Pearl and Tiger Penshell.

# CRESCENDO

SOLID  
BRASS



ED-Estate Dover ■ IM-Imperial Shell ■ MOP-Mother of Pearl  
PEN-Tiger Penshell ■ PN-Polished Nickel

# INTERLUDE

SOLID  
BRASS



ED-Estate Dover ■ IM-Imperial Shell ■ MOP-Mother of Pearl  
PEN-Tiger Penshell ■ PN-Polished Nickel

# CADENCE

SOLID  
BRASS



ED-Estate Dover ■ IM-Imperial Shell ■ MOP-Mother of Pearl  
PEN-Tiger Penshell ■ PN-Polished Nickel



# ARIOSO

SOLID  
BRASS



ED-Estate Dover ■ IM-Imperial Shell ■ MOP-Mother of Pearl  
PEN-Tiger Penshell ■ PN-Polished Nickel

# FAIR ISLE

SOLID  
BRASS



AD-Aged Dover ■ PB-Polished Brass ■ PN-Polished Nickel

# AVALON BAY

SOLID  
BRASS



AD-Aged Dover ■ DAB-Dark Antique Bronze ■ ED-Estate Dover  
PB-Polished Brass ■ PEN-Tiger Penshell ■ PN-Polished Nickel

# IMPERIAL SHELL

SOLID  
BRASS



IM-Imperial Shell ■ PN-Polished Nickel

# MOTHER OF PEARL

SOLID  
BRASS



MOP-Mother of Pearl ■ PN-Polished Nickel

# TIGER PENSHELL

SOLID  
BRASS



DAB-Dark Antique Bronze ■ ED-Estate Dover ■ PEN-Tiger Penshell

# CHALICE & EASTLAKE

SOLID  
BRASS



CA-Cottage Antique ■ DG-Dark Glaze ■ MBR-Monticello Brass  
MSL-Monticello Silver ■ WB-White Brass

# CANTATA

SOLID  
BRASS



DG-Dark Glaze ■ DIA-Dark Italian Antique ■ MBR-Monticello Brass



# CANTATA

SOLID  
BRASS



MSL-Monticello Silver ■ WB-White Brass

# FRENCH COURT

SOLID  
BRASS



936-WB



937-WB



987-WB



988-WB



996-WB



934L-WB

934R-WB



915-WB



935L-WB

935R-WB



919-WB



817-WB

# FRENCH COURT

SOLID  
BRASS



936-MSL



987-MSL



937-MSL



988-MSL



996-MSL



934L-MSL

934R-MSL



915-MSL



935L-MSL

935R-MSL



919-MSL



817-MSL

# FRENCH COURT

SOLID  
BRASS



936-MBR



987-MBR



937-MBR



988-MBR



996-MBR



934L-MBR

934R-MBR



915-MBR



935L-MBR

935R-MBR



919-MBR



817-MBR

# SWANS

SOLID  
BRASS



# SUNBURST

SOLID  
BRASS



# SUNFLOWER

SOLID  
BRASS



DG-Dark Glaze ■ ED-Estate Dover ■ WB-White Brass

# SONATA

SOLID  
BRASS

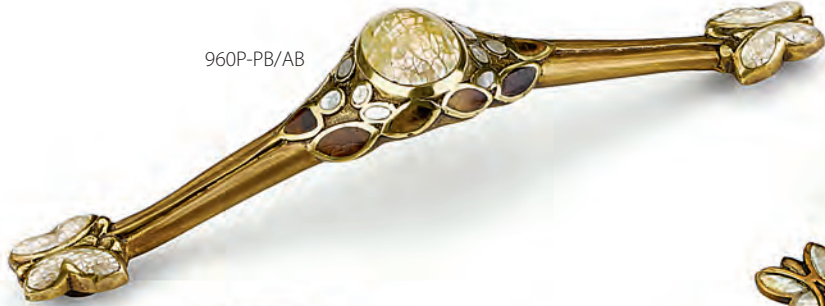


DAB-Dark Antique Bronze ■ PAR-Paris Brass ■ PN-Polished Nickel ■ WB-White Brass



# HEIRLOOM TREASURES

SOLID  
BRASS



# WINE THEMES

SOLID  
BRASS



942M-ED/PEN



942M-SN/MOP



942S-ED/PEN



942S-SN/MOP



945-AWW



945-DBH



944-AB/DBH



944-SN/DBH

AB-Antique Brass ■ AWW-Antique White Wash ■ DBH-Dark Bronze Hi Lited  
ED-Estate Dover ■ MOP-Mother-of-Pearl ■ SN-Satin Nickel ■ PEN-Tiger Penshell

# NATURE

SOLID  
BRASS

865-MOP/DSW



895-PBZ/HBZ



918-ED



951S-PEN



980L-PB/BZ



980R-PB/BZ



864-MOP/ED

897-ED



908-PBZ



892-MOP/ED



891-PAR



BZ-Bronze ■ DSW-Dark Sherwood ■ ED-Estate Dover  
HBZ-Hi Lited Bronze ■ MOP-Mother-of-Pearl ■ PAR-Paris Brass ■ PB-Polished Brass  
PBZ-Pompeian Bronze ■ PEN-Tiger Penshell (PEN)

# INDEX

PART	COLLECTION	PAGE	PULL CENTER TO CENTER	KNOB DIAMETER	PROJECTION	BASE DIAMETER	OVERALL	SCREW SIZE
20-	Kingsway	67		1-1/4"	1"	1"		#8-32
21-	Kingsway	67		1-1/4"	1"	1" x 1"		#8-32
22-	Kingsway	67	4"		1-1/8"	3/4"	5"	#8-32
25-	Tallmadge	29		1-1/4"	1-1/4"	1/2"		#8-32
26-	Tallmadge	29		1-3/4" x 1-1/8"	1-1/4"	1/2" x 3/8"		#8-32
27-	Tallmadge	29	4"		1-1/4"	1/2" x 3/8"	5-7/8"	#8-32
30-	Ice	28	3"		1"	1/2"	4-1/2"	#8-32
31-	Ice	28		1-1/2"	1"	1/2"		#8-32
34-	Ice	28		1-1/2" x 1-1/2"	1"	1/2"		#8-32
52-	City Lights	24		1-3/4" x 1-3/8"	1-1/2"	1-1/4"	1-3/4" x 1-3/8"	#8-32
53-	City Lights	24		1-3/4"	1-1/8"	1-1/4"		#8-32
54-	City Lights	24		1-3/4"	1-1/2"	1-1/4"		#8-32
55-	City Lights	24		1-1/8"	1-3/8"	7/8"		#8-32
56-	City Lights	24		1-3/8"	1-1/8"	7/8"		#8-32
57-	City Lights	24		1-1/4"	1-1/8"	7/8"		#8-32
59-	City Lights	24		1-3/8"	1-3/4"	3/4"		#8-32
60-	City Lights	24		1-3/4" x 1-1/8"	1-1/2"	7/8"	1-3/4" x 1-1/8"	#8-32
61-	City Lights	24		1-1/4"	1-1/8"	3/4"		#8-32
63-	Cabriole	58		1-1/8"	1"	7/8"		#8-32
64-	Cabriole	58	96 mm		1-3/8"	3/8"	4"	#8-32
64-6-	Cabriole	58	6"		1-1/2"	1/2"	6-1/2"	#8-32
64-8-	Cabriole	58	8"		1-5/8"	1/2"	8-1/2"	#8-32
64-13-	Cabriole	58	13"		2-1/2"	5/8" x 7/8"	14"	1/4-20
70-	Stargaze	66		1-1/8"	1-5/8"	3/4"		#8-32
71-	Stargaze	66		1-1/4"	1-1/8"	3/4"		#8-32
72-	Stargaze	66		1-1/16"	1-1/16"	3/4"		#8-32
74-	City Lights	25		7/8"	1-1/4"	7/8"		#8-32
76-	City Lights	25		1-1/8"	1-3/8"	1-1/8"		#8-32
77-	City Lights	25		1-3/8"	3/4"	1-1/4"		#8-32
78-	Steamworks	55		1-1/4"	1"	3/4"		#8-32
79-	Steamworks	55	96 mm		1-1/4"	1/2"	4-1/2"	#8-32
79-6-	Steamworks	55	6"		1-1/4"	1/2"	7"	#8-32
79-8-	Steamworks	55	8"		1-3/8"	5/8"	9-1/4"	#8-32
79-12-	Steamworks	55	12"		2"	7/8"	13-7/8"	1/4-20
79-15-	Steamworks	55	15"		2-1/4"	1"	17"	1/4-20

# INDEX

PART	COLLECTION	PAGE	PULL CENTER TO CENTER	KNOB DIAMETER	PROJECTION	BASE DIAMETER	OVERALL	SCREW SIZE
131-	Artifex	11		1-1/2"	1-3/8"	5/8"		M4
132-	Artifex	11		1-1/8"	1-1/4"	5/8"		M4
133-	Perla	10		1-3/4" x 1"	1-1/4"	5/8"		M4
134-	Perla	10		1-3/8"	1-1/4"	5/8"		M4
135-	Perla	10		1-3/8"	1-1/4"	5/8"		M4
136-	Perla	10	128 mm		1-1/8"	1-3/8"	6-1/2"	M4
137-	Perla	10	64 mm		1-1/8"		3-3/8" x 1-1/4"	M4
139-	Perla	10	12"		1-1/2"	2"	15"	M6
140-	Perla	10	12"		2-1/8"	2-1/2"	16-1/8"	M6
141-64-	Chemin de Fer	10	64 mm		1-1/8"	1/2"	3-3/4"	M4
141-96-	Chemin de Fer	10	96 mm		1-1/8"	1/2"	5"	M4
141-128-	Chemin de Fer	10	128 mm		1-1/8"	9/16"	6-5/8"	M4
141-224-	Chemin de Fer	10	224 mm		1-3/8"	9/16"	10"	M4
141-384-	Chemin de Fer	10	384 mm		1-3/8"	5/8"	16-3/4"	M4
143-300-	Chemin de Fer	10	300 mm		2-1/2"	1-1/16"	14-3/8"	M4
144-	Chemin de Fer	10			1-1/8"	1/2"	1-3/4"	M4
170-	Martello	16		1-3/4"	1"	1/2"		M4
171-	Martello	16		1-1/2" x 1-1/2"	1"	1/2"		M4
172-	Martello	16		1-3/4" x 1-1/8"	1"	1/2"		M4
173-	Martello	16	96 mm		3/4"	1/2"	4-1/2" x 1-5/8"	M4
174-	Martello	16	128 mm		1"	3/8" x 1"	5-1/2"	M4
175-	Martello	16	160 mm		1-1/8"	7/8" x 1/2"	6-7/8"	M4
176-	Martello	16	128 mm		1-3/8"	1/2"	7"	M4
177-	Martello	16	160 mm		1-3/8"	1/2"	8-1/2"	M4
178-	Martello	16	224 mm		1-3/8"	1/2"	10-7/8"	M4
179-	Martello	16	305 mm		1-3/8"	1/2"	14"	M4
180-	Viento	17		1-3/4"	1"	1/2"		M4
181-	Viento	17		1-1/2" x 1-1/2"	1"	1/2"		M4
182-	Viento	17		1-3/4" x 1-1/8"	1"	1/2"		M4
183-	Viento	17	96 mm		3/4"	1/2"	4-1/2" x 1-5/8"	M4
184-	Viento	17	128 mm		1"	3/8" x 1"	5-1/2"	M4
185-	Viento	17	160 mm		1-1/8"	7/8" x 1/2"	6-7/8"	M4
186-	Viento	17	128 mm		1-3/8"	1/2"	7"	M4
187-	Viento	17	160 mm		1-3/8"	1/2"	8-1/2"	M4
188-	Viento	17	224 mm		1-3/8"	1/2"	10-7/8"	M4

# INDEX

PART	COLLECTION	PAGE	PULL CENTER TO CENTER	KNOB DIAMETER	PROJECTION	BASE DIAMETER	OVERALL	SCREW SIZE
189-	Viento	17	305 mm		1-3/8"	1/2"	14"	M4
200-	Northport	49-50	3-1/2"		1-3/8"	1-1/8"	4-1/4"	#8-32
201-	Northport	49-50	4"		1-3/8"	1-1/8"	4-3/4"	#8-32
202-	Northport	49-50	6"		1-1/2"	1-1/2"	7"	#8-32
203-	Northport	49-50	10"		1-1/2"	1-1/2"	11"	#8-32
204-	Northport	49-50	12"		1-1/2"	1-1/2"	13"	#8-32
205-	Northport	49-50	3-1/2"		1-3/8"	1"	4-1/2"	#8-32
206-	Northport	49-50	4"		1-3/8"	1"	5"	#8-32
207-	Northport	49-50	6"		1-1/2"	1"	7"	#8-32
208-	Northport	49-50	10"		1-1/2"	1"	11"	#8-32
209-	Northport	49-50	12"		1-1/2"	1"	13"	#8-32
210-	Northport	49-50		1-3/8"	1-1/8"	1"		#8-32
211-	Northport	49-50		1-3/8"	1-1/8"	1"		#8-32
212-	Northport	49-50	5"		1-3/16"	1 1/4"	6"	#8-32
213-	Northport	49-50	8"		1 1/4"	1 1/4"	9"	#8-32
214-	Northport	49-50	15"		1-7/8"	1-3/8"	16"	#8-32
215-	Northport	49-50		1-3/8"	1-1/8"	1"		#8-32
216-	Northport	49-50	5"		1-3/16"	1"	6"	#8-32
217-	Northport	49-50	8"		1-1/4"	1-1/4"	9"	#8-32
218-	Northport	49-50	15"		1-3/4"	1-3/8"	16-1/2"	#8-32
219-	Northport	49-50		1-3/8"	1-1/8"	1"		#8-32
221-	Classico	42	128 mm		7/8"	5/8" x 1/2"	5-3/8"	M4
222-	Classico	42	160 mm		7/8"	5/8" x 1/2"	6-3/4"	M4
223-	Classico	42	192 mm		7/8"	5/8" x 1/2"	8-1/8"	M4
224-	Classico	42	320 mm		7/8"	5/8" x 1/2"	13-1/8"	M4
233-	Mosaic	30	320 mm		1"	1/2" x 1/4"	14-1/2"	M4
234-	Mosaic	30	32 mm	1-7/8"	7/8"	1-5/8" x 3/8"	1-7/8"	M4
235-	Mosaic	30	32 mm		7/8"	1-5/8" x 3/8"	1" x 1-7/8"	M4
236-	Mosaic	30	128 mm		1"	1/2" x 1/4"	6-1/2" x 1"	M4
237-	Mosaic	30	32 mm		7/8"	1-5/8" x 3/8"	1" x 1-7/8"	M4
239-	Aria	37	96/128 mm		7/8"	1/4"	5-1/2"	M4
240-	Aria	37	160/192 mm		7/8"	1/4"	8"	M4
241-	Aria	37	96/128 mm		7/8"	3/8"	5-1/2"	M4
242-	Aria	37	160/192 mm		7/8"	3/8"	8"	M4
244-064-	Wave	42	64 mm		7/8"		3-5/8" x 3/4"	M4

# INDEX

PART	COLLECTION	PAGE	PULL CENTER TO CENTER	KNOB DIAMETER	PROJECTION	BASE DIAMETER	OVERALL	SCREW SIZE
244-160-	Wave	42	160 mm		1"		7-3/4" x 1"	M4
244-192-	Wave	42	192 mm		1"		9-1/4" x 1"	M4
244-320-	Wave	42	320 mm		1"		14-1/4" x 1"	M4
245-128-	Tenor	36	128 mm		1-3/8"		5-1/2" x 1-1/4"	M4
245-160-	Tenor	36	160 mm		1-3/8"		6-3/4" x 1-1/4"	M4
245-224-	Tenor	36	224 mm		1-3/8"		9-1/4" x 1-1/4"	M4
245-288-	Tenor	36	288 mm		1-3/8"		11-3/4" x 1-1/4"	M4
245-384-	Tenor	36	384 mm		1-3/8"		15-1/2" x 1-1/4"	M4
246-128-	Tenor	36	128 mm		1-5/8"		5-1/2" x 3/8"	M4
246-160-	Tenor	36	160 mm		1-5/8"		6-3/4" x 3/8"	M4
246-224-	Tenor	36	224 mm		1-5/8"		9-1/4" x 3/8"	M4
246-288-	Tenor	36	288 mm		1-5/8"		11-3/4" x 3/8"	M4
246-384-	Tenor	36	384 mm		1-5/8"		15-1/2" x 3/8"	M4
247-096-	Profile	38	96 mm		1-1/16"	1/4"	5-3/8"	M4
247-128/160-	Profile	38	128/160 mm		1-1/16"	1/4"	7-15/16"	M4
247-192/224-	Profile	38	192/ 224 mm		1-1/16"	1/4"	10-1/2"	M4
247-320/352-	Profile	38	320/352 mm		1-1/16"	1/4"	16-1/2"	M4
248-096-	Profile	38	96/128 mm		1-1/16"	3/16"	5-3/8"	M4
248-160-	Profile	38	160/192 mm		1-1/16"	3/16"	7-7/8"	M4
248-288-	Profile	38	288/320 mm		1-1/16"	3/16"	12-15/16"	M4
248-448-	Profile	38	448/480 mm		1-1/16"	3/16"	19-3/16"	M4
250-	Siena	15		1-3/8"	1"	3/4"		#8-32
251-	Siena	15		1-1/2"	1-1/8"	3/4"		#8-32
252-	Siena	15		1-1/4"	1-1/8"	3/4"	3/4" x 1-1/4"	#8-32
253-	Siena	15		2-7/8"	1-1/2"	3/4"	3/4" x 2-7/8"	#8-32
254-	Siena	15	3"		1"		1-3/4" x 4-3/4"	#8-32
255-	Siena	15	96 mm		1-3/8"	5/8"	4-3/8"	#8-32
256-	Siena	15	8"		1-3/8"	5/8"	8-3/4"	#8-32
257-	Siena	15	12"		1-3/4"	7/8"	12-3/4"	#8-32
258-	Siena	15	5"		1-1/4"	1-1/4"	6-1/4"	#8-32
260-	French Farm	65		1-5/16"	1"	3/4"		#8-32
261-	French Farm	65		1-7/8"	1"	5/8"	7/8" x 1-7/8"	#8-32
262-	French Farm	65	96 mm		7/8"	7/8" x 1/2"	6-1/2"	#8-32
263-	French Farm	65	8"		1-3/8"	2-1/4" x 1-1/4"	11-3/4"	#8-32
264-	French Farm	65	12"		1-3/4"	2-1/2" x 1-1/4"	16-1/2"	#8-32

# INDEX

PART	COLLECTION	PAGE	PULL CENTER TO CENTER	KNOB DIAMETER	PROJECTION	BASE DIAMETER	OVERALL	SCREW SIZE
265-	French Farm	65	3"		1-1/8"		2" x 4-3/4"	#8-32
280-	Firenza	74	96/128 mm		7/8"	5/16"	6-1/8"	M4
281-	Firenza	74	96 mm		7/8"	5/16"	4-7/16" x 1-1/8"	M4
282-	Firenza	74	96 mm		9/16"	5/16"	4-11/16" x 1-1/2"	M4
283-	Firenza	74		1-1/8"	15/16"	1/2"		M4
284-	Firenza	74	128 mm		1-3/8"	11/16"	5-11/16"	M4
299-	Skyevale	31		1/2" x 1/2"	1"	3/8"		M4
300-	Skyevale	31		1/2" x 1/2"	1"	3/8"		M4
301-	Skyevale	31	32 mm		1"	1/4"	2-1/2"	M4
302-	Skyevale	31	128/160 mm		1-1/8"	1-1/8"	7-1/2"	M4
303-	Skyevale	31	288/320 mm		1-3/8"	1-3/8"	13-3/8"	M4
304-	Skyevale	31	32 mm		1"	1-1/4"	2-1/2"	M4
305-	Skyevale	31	128/160 mm		1-1/8"	1-1/8"	7-1/2"	M4
306-	Skyevale	31	288/320 mm		1-3/8"	1-3/8"	13-3/8"	M4
307-	Sorrento	41	32 mm		1-1/4"	2-1/2"	6-3/8"	M4
308-	Sorrento	41	96/128mm		1"	1"	5-1/2"	M4
309-	Sorrento	41	160/192 mm		1-1/8"	1-1/2"	8-1/4"	M4
310-	Sorrento	41	288/320 mm		1-1/8"	2-1/2"	13-3/8"	M4
311-	Sorrento	41	448/480 mm		1-1/4"	4"	19-5/8"	M4
312-	Sorrento	41	96/128 mm		1"	1"	5-3/8"	M4
313-	Sorrento	41	160/192 mm		1"	1"	7-7/8"	M4
314-	Sorrento	41	288/320 mm		1"	1"	13"	M4
315-	Positano	26-27	64 mm		1"	1/2"	2-7/8"	M4
316-	Positano	26-27	128 mm		1"	1/2"	5-3/8" x 1"	M4
317-	Positano	26-27	160 mm		1"	1/2"	6-5/8" x 1"	M4
318-	Positano	26-27	320 mm		1"	1/2"	13" x 1"	M4
319-	Positano	26-27	16 mm	1-1/4" x 1-1/2"	1"	1-1/4"	1-1/4" x 1-1/2"	M4
320-	Positano	26-27	128 mm		1"	1/2"	5-3/8" x 1"	M4
321-	Positano	26-27	160 mm		1"	1/2"	6-5/8" x 1"	M4
322-	Positano	26-27	224 mm		1"	1/2"	9-1/4" x 1"	M4
323-	Positano	26-27	32 mm		1-3/4"	2-1/2" x 1/2"	2-1/2" x 1-3/4"	M4
324-	Positano	26-27	128 mm		1-3/4"	6-1/4" x 1/2"	6-1/4" x 1-3/4"	M4
360-	Armadio	34		1-3/8"	7/8"	3/8"		M4
361-	Armadio	34	32 mm		1"	1-1/2" x 1/4"	4-3/4"	M4
362-	Armadio	34	64 mm		7/8"	3/4" x 1/4"	3-1/2"	M4



# INDEX

PART	COLLECTION	PAGE	PULL CENTER TO CENTER	KNOB DIAMETER	PROJECTION	BASE DIAMETER	OVERALL	SCREW SIZE
363-	Armadio	34	128 mm		1"	1" x 1/4"	6-1/2"	M4
364-	Armadio	34	160/192 mm		1"	1-1/2" x 1/4"	9-1/4"	M4
365-	Armadio	34	288/320 mm		1-1/8"	1-1/2" x 1/4"	14-1/4"	M4
370-	Regatta	39	128 mm		1-1/8"	3/8" x 5/16"	7-1/4"	M4
371-	Regatta	39	224 mm		1-1/8"	3/8" x 5/16"	11-1/8"	M4
372-	Regatta	39	288 mm		1-1/8"	3/8" x 5/16"	13-5/8"	M4
373-	Regatta	39	320 mm		1-1/8"	3/8" x 5/16"	14-7/8"	M4
401-	Lumiere	23		2"	1-1/4"	7/8"	2"	#8-32
402-	Lumiere	23	12"				15"	1/4-20
404-	Lumiere	23	4"		1-1/4"	7/8"	6"	#8-32
406-	Lumiere	23	6"		1-1/4"	7/8"	8"	#8-32
408-	Lumiere	23	8"		1-1/4"	7/8"	10"	#8-32
411-	Lumiere Transitional	46		2"	1-1/4"	7/8"	2"	#8-32
412-	Lumiere Transitional	46	12"				15"	1/4-20
414-	Lumiere Transitional	46	4"		1-1/4"	7/8"	6"	#8-32
416-	Lumiere Transitional	46	6"		1-1/4"	7/8"	8"	#8-32
418-	Lumiere Transitional	46	8"		1-1/4"	7/8"	10"	#8-32
421-	Foncé	22		2"	1-1/4"	7/8"	2"	#8-32
422-	Foncé	22	12"		2"	1-1/8"	15"	1/4-20
424-	Foncé	22	4"		1-1/4"	7/8"	6"	#8-32
426-	Foncé	22	6"		1-1/4"	7/8"	8"	#8-32
428-	Foncé	22	8"		1-1/4"	7/8"	10"	#8-32
440-	Finestrino	33	32 mm		3/4"		2-3/4" x 2-3/4"	M4
441-	Finestrino	33	64 mm		3/4"		3-1/2" x 2-1/8"	M4
442-	Finestrino	33	160 mm		3/4"		7" x 2-1/8"	M4
443-	Finestrino	33	64 mm		7/8"		3-1/2" x 3-1/2"	M4
444-	Finestrino	33	96 mm		7/8"		4-5/8" x 2-1/8"	M4
445-	Finestrino	33	128 mm		7/8"		5-7/8" x 2-1/8"	M4
446-	Finestrino	33	192 mm		7/8"		8-1/2" x 2-1/8"	M4
450-	Finestrino	33	32 mm		7/8"		2-1/4" x 2-1/4"	M4
451-	Finestrino	33	160 mm		7/8"		7" x 1-3/4"	M4
454-	San Marco	20	96 mm					M4
455-	San Marco	20	160 mm					M4
456-	San Marco	20	320 mm					M4
470-	Haniburton	47		1-1/4"	1-1/8"	3/8"		#8-32

# INDEX

PART	COLLECTION	PAGE	PULL CENTER TO CENTER	KNOB DIAMETER	PROJECTION	BASE DIAMETER	OVERALL	SCREW SIZE
471-	Haniburton	47		1-1/4"	1-1/8"	1-1/4 x 3/8"		#8-32
472-	Haniburton	47		1/2"	1-3/8"	5/8"	2"	#8-32
473-	Haniburton	47		1/2"	1-1/4"	5/8"	1-5/8"	#8-32
474-	Haniburton	47	4"		1-1/4"	5/8"	4-5/8"	#8-32
476-	Haniburton	47	6"		1-3/8"	5/8"	6-5/8"	#8-32
478-	Haniburton	47	8"		1-1/2"	3/4"	8-3/4"	#8-32
479-	Haniburton	47	15"		1-7/8"	1"	16"	1/4-20
501-	Italian Contemporary	35	4"		1-1/8"	3/8"	4-1/4"	#8-32
502-	Italian Contemporary	35	6"		1-1/8"	3/8"	6-3/16"	#8-32
503A-	Italian Contemporary	35	13-3/4"		2-1/8"	1"	14-3/8"	M6
511-	Italian Contemporary	35	4"		1-3/16"	3/8"	4-3/16"	#8-32
512-	Italian Contemporary	35	6"		1-3/16"	3/8"	6-1/4"	#8-32
513A-	Italian Contemporary	35	13-3/4"		2-3/4"	1"	14-1/2"	M6
522-	Menlo Park	52-53	3-1/2"		1-1/8"	3/4"	4-1/4"	#8-32
523-	Menlo Park	52-53	5"		1-1/8"	3/4"	5-3/4"	#8-32
524-	Menlo Park	52-53	10"		1-1/8"	3/4"	10-3/4"	#8-32
525-	Menlo Park	52-53	12"		1-1/8"	3/4"	12-3/4"	#8-32
526-	Menlo Park	52-53	3-1/2"		1-1/8"	3/4"	4"	#8-32
527-	Menlo Park	52-53	5"		1-1/4"	3/4"	5-1/2"	#8-32
528-	Menlo Park	52-53	10"		1-1/4"	3/4"	10-1/2"	#8-32
529-	Menlo Park	52-53	12"		1-1/4"	3/4"	12-1/2"	#8-32
530-	Menlo Park	52-53		1-1/4"	1"	3/4"		#8-32
531-	Menlo Park	52-53		1-1/4"	1"	3/4"		#8-32
532-	Menlo Park	52-53		1-1/4"	1-1/8"	3/4"		#8-32
533-	Menlo Park	52-53		1-1/4"	1-1/8"	1"		#8-32
534-	Menlo Park	52-53	3-1/2"		1-1/4"		4-1/2"	#8-32
535-	Menlo Park	52-53	15"		2"	1-1/4"	16-1/2"	1/4-20
536-	Menlo Park	52-53	8"		1-1/8"	1"	8-3/4"	#8-32
537-	Menlo Park	52-53	6"		1"	3/4"	6-3/4"	#8-32
538-	Menlo Park	52-53	4"		1-1/8"	3/4"	4-3/4"	#8-32
539-	Menlo Park	52-53	15"		2"	1-1/8"	16-1/8"	1/4-20
540-	Menlo Park	52-53	8"		1"	3/4"	8-1/2"	#8-32
541-	Menlo Park	52-53	6"		1"	1/2"	6-1/2"	#8-32
542-	Menlo Park	52-53	4"		1"	1/2"	4-1/2"	#8-32
550-	Heathrow	21		1-1/4"	1"	3/4"		#8-32

# INDEX

PART	COLLECTION	PAGE	PULL CENTER TO CENTER	KNOB DIAMETER	PROJECTION	BASE DIAMETER	OVERALL	SCREW SIZE
551-	Heathrow	21		1-1/4"	1"	3/4"		#8-32
552-	Heathrow	21		1-3/4"	1-1/4"	3/4"		#8-32
553-	Heathrow	21	4"		1-1/4"	3/4"	5-3/4"	#8-32
554-	Heathrow	21	6"		1-3/8"	3/4"	8"	#8-32
555-	Heathrow	21	8"		1-3/8"	3/4"	10-1/4"	#8-32
557-	Heathrow	21	12"		2"	1"	14-1/2"	1/4-20
558-	Heathrow	21	18"		2"	1"	20-1/2"	1/4-20
559-	Heathrow	21	24"		2"	1"	26-1/2"	1/4-20
560-	Heathrow	21	3-1/2"		1-1/4"	3/4"	5-1/4"	#8-32
561-	Heathrow	21	5"		1-1/4"	3/4"	6-3/4"	#8-32
562-	Heathrow	21	10"		1-1/4"	3/4"	11-3/4"	#8-32
563-	Heathrow	21	12"		1-1/4"	3/4"	13-3/4"	#8-32
570-	Atherton	59		1-1/4"	1-1/8"	3/4"		#8-32
571-	Atherton	59		1-1/4"	1-1/8"	3/4"		#8-32
572-	Atherton	59		1-1/4"	1-1/8"	3/4"		#8-32
573-	Atherton	59	3"		1-1/2"		4-1/2" x 2"	#8-32
574-	Atherton	59	3"		1-1/2"		4-1/2" x 2"	#8-32
575-	Atherton	59	3"		1-1/2"		4-1/2" x 2"	#8-32
576-	Atherton	59	4"		1-1/4"	1-1/4" w/o plate 1/2"	4-1/2"	#8-32
577-	Atherton	59	8"		1-1/2"	1-1/4" w/o plate 1/2"	8-1/2"	#8-32
578-	Atherton	59	15"		2"	1-1/2" w/o plate 5/8"	15-3/4"	1/4-20
579-	Atherton	59	4"		1-1/4"	1-1/4" w/o plate 1/2"	4-1/2"	#8-32
580-	Atherton	59	8"		1-1/2"	1-1/4" w/o plate 1/2"	8-1/2"	#8-32
581-	Atherton	59	15"		2"	1-1/2" w/o plate 5/8"	15-3/4"	1/4-20
610-	Crescendo	78	1-1/2"		1"	3/8"	2-1/4" x 7/8"	#8-32
611-	Crescendo	78	5-5/8"		1"	3/4"	6"	#8-32
615-	Crescendo	78		2" x 7/8"	1"	3/8"	7/8" x 2"	#8-32
616-	Crescendo	78	5-5/8"		1"	3/4"	6"	#8-32
620-	Interlude	79	1-1/4"		1"	1/2"	1-3/4"	#8-32
621-	Interlude	79	4-1/2"		1-1/8"	1/2"	5"	#8-32
622-	Interlude	79	5-3/8"		1-1/4"	1/2"	6"	#8-32
630-	Arioso	81	1-3/4"		1"	1/2"	2"	#8-32
631-	Arioso	81	3-3/4"		1"	1/2"	4"	#8-32
632-	Arioso	81	5-5/8"		1-1/8"	1/2"	6"	#8-32
635-	Arioso	81	2-7/8"		1"	3/8"	3-1/2"	#8-32

# INDEX

PART	COLLECTION	PAGE	PULL CENTER TO CENTER	KNOB DIAMETER	PROJECTION	BASE DIAMETER	OVERALL	SCREW SIZE
636-	Arioso	81	4-7/8"		1-1/8"	3/8"	6"	#8-32
640-	Cadence	80		1-3/4"	1"	5/16"	1-3/4" x 1"	#8-32
641-	Cadence	80	5-1/2"		1"	3/4" x 1"	6-1/2"	#8-32
645-	Cadence	80	1-3/8"	1-7/8"	1"	3/8"	1-7/8" x 1"	#8-32
646-	Cadence	80	5-1/2"		1"	3/8"	7/8" x 6"	#8-32
650-	Fair Isle	82		1-1/8"	1"	1/2"		#8-32
651-	Fair Isle	82		1-1/2"	1-1/4"	1/2"		#8-32
653-	Fair Isle	82		1-3/8"	1-1/8"	1/2"		#8-32
654-	Fair Isle	82		1-1/4" x 7/8"	1-1/4"	3/4" x 5/8"		#8-32
655-	Fair Isle	82		1-1/2"	1-3/8"	3/4"		#8-32
656-	Fair Isle	82	3/4"		1-1/4"	1/4"	2-1/4" x 1-3/4"	#8-32
657-	Fair Isle	82		1-5/8" x 1-1/8"	1"	3/8"		#8-32
658-	Avalon Bay	83		1-3/8" x 1-3/8"	1-1/8"	3/4"		#8-32
659-	Avalon Bay	83		1-7/8" x 1-1/4"	1-1/4"	7/8"		#8-32
660-	Avalon Bay	83	3"		1-1/4"	3/8"	4"	#8-32
661-	Avalon Bay	83		1-7/8" x 1"	1-1/8"	1/2" x 1/2"		#8-32
662-	Avalon Bay	83	4"		1-1/8"	1-1/8" x 1/2"	4-7/8"	#8-32
664-	Imperial Shell	84		1-1/2" x 1-1/4"	1"	1/2"		#8-32
671-	Avalon Bay	83		1-1/4" x 1-1/4"	1"	1/2"		#8-32
703-	Traditional	60-61		1-1/4"	7/8"	3/4"		#8-32
704-	Traditional	60-61		1-1/2"	1"	1"		#8-32
706-	Traditional	60-61		1-1/4"	1"	3/4"		#8-32
711-	Traditional	60-61		1-1/4"	7/8"	5/8"		#8-32
719-	Traditional	60-61		1-3/8"	1-1/4"	1/2"		#8-32
721-	Traditional	60-61	3"		7/8"	3/8"	3-3/8"	#8-32
730-	Traditional	60-61	3"		1"		3-3/4" x 1-1/4"	#8-32
731-	Traditional	60-61	3"		1"		4-5/8" x 1-3/8"	#8-32
732-	Traditional	60-61	4"		1-1/8"	3/8"	4-3/8"	#8-32
737-	Traditional	60-61	6"		1-1/4"	1/2"	6-3/8"	#8-32
738-	Traditional	60-61	15"		2-1/4"	3/4"	15-1/2"	1/4-20
739-	Traditional	60-61	10"		2-1/8"	1" x 5/8"	10-1/2"	1/4-20
742-	Country	63	4"		1-1/8"	1"	5-1/8"	#8-32
743-	Country	63	3"		3/4"		3-3/4" x 1"	#8-32
744-	Country	63	6"		3/4"		6 5/8" x 1"	#8-32
745-	Country	63	6"		1-1/4"	1-1/8"	7-1/2"	#8-32

# INDEX

PART	COLLECTION	PAGE	PULL CENTER TO CENTER	KNOB DIAMETER	PROJECTION	BASE DIAMETER	OVERALL	SCREW SIZE
746-	Country	63	12"		1-13/16"	1-13/16"	14-1/4"	1/4-20
747-	Colonial	64	4"		1-3/16"	7/16"	4-5/16"	#8-32
748-	Colonial	64	6"		1-7/8"	3/4"	6-5/8"	1/4-20
749-	Colonial	64	12"		2-1/4"	7/8"	12-7/8"	1/4-20
751-	Versailles	70		1-1/4"	1"	1/2"		#8-32
752-	Versailles	70		1-1/2"	1-1/4"	5/8"		#8-32
753-	Versailles	70	3"		1-1/8"	3/4" x 3/8"	4-1/8"	#8-32
754-	Versailles	70	3-1/2"		1-1/8"	3/4" x 3/8"	4-1/2"	#8-32
756-	Versailles	70			1/8"	1-1/2"		#8-32
761-	Versailles	70			1/8"		4-1/4" x 1"	#8-32
762-	Versailles	70	96 mm		1-1/8"	1/2"	4-1/4"	#8-32
763-	Versailles	70	96 mm		1/8"		7-3/16" x 1"	#8-32
764-	Versailles	70	10"		2-1/2"	7/8"	10-3/4"	1/4-20
765-	Vinci	13		1"	15/16"	1/2"		#8-32
768-	Mountain	8-9		2"	1-3/8"	1/2"		#8-32
771-	Mountain	8-9		1-1/4"	1-1/8"	1/2"		#8-32
772-	Mountain	8-9		1-3/8"	1-1/4"	5/8"		#8-32
773-	Mountain	8-9		1-5/8"	1-1/4"	5/8"		#8-32
775-	Mountain	8-9	3-1/2"		1"		4-1/8" x 1-3/4"	#8-32
776-	Ovale	14		1-3/4"	1-1/8"	3/4"		#8-32
777-	Mountain	8-9	4"		1-1/4"	1" x 3/4"	5"	#8-32
778-	Mountain	8-9	6"		1-1/4"	1-1/8" x 7/8"	7-1/4"	#8-32
779-	Mountain	8-9	12"		1-5/8"	1-1/8" x 7/8"	13"	1/4-20
780-	Mountain	8-9	18"		1-3/4"	1-1/2" x 1-1/8"	19-3/8"	1/4-20
781-	Mountain	8-9		1-3/8"	1-3/8"	5/8"		#8-32
782-	Mountain	8-9		1-7/8"	1-1/4"	5/8"	1-7/8" x 1"	#8-32
783-	Mountain	8-9	4"		1-1/2"	3/8"	6"	#8-32
784-	Mountain	8-9	6"		1-3/4"	3/8"	7-1/4"	#8-32
785-	Mountain	8-9	12"		2-1/8"	5/8"	15-5/8"	1/4-20
786-12-	Vinci	13	12"					#8-32
787-5-	Ovale	14	5"		1-3/8"	1/2" x 3/4"	5-7/8" x 7/8"	#8-32
787-10-	Ovale	14	10"		1-1/2"	5/8" x 7/8"	10-15/16" x 15/16"	1/4-20
787-18-	Ovale	14	18"		1-3/4"	3/4" x 1"	19" x 1-3/16"	1/4-20
787-96-	Ovale	14	96mm		1-3/8"	1/2" x 3/4"	5-7/8" x 7/8"	#8-32
787-128-	Ovale	14	128 mm		1-3/8"	1/2" x 3/4"	5-7/8" x 7/8"	1/4-20

# INDEX

PART	COLLECTION	PAGE	PULL CENTER TO CENTER	KNOB DIAMETER	PROJECTION	BASE DIAMETER	OVERALL	SCREW SIZE
788-12-	Vinci	13	12"		1-1/2"	7/16"	12-1/2"	1/4-20
788-18-	Vinci	13	18"		1-9/16"	1/2"	18-5/8"	1/4-20
788-18A-	Vinci	13	18"		2"	5/8"	18-3/4"	1/4-20
788-4-	Vinci	13	4"		1-1/8"	5/16"	4-5/16"	#8-32
788-5-	Vinci	13	5"		1-1/4"	3/8"	5-5/16"	#8-32
788-6-	Vinci	13	6"		1-1/4"	3/8"	6-5/16"	#8-32
788-8-	Vinci	13	8"		1-1/4"	3/8"	8-5/16"	#8-32
789-	Vinci	13		1-1/4"	1-1/4"	1/2"		#8-32
790-	Montcalm	69		1-3/8"	1-1/4"	7/8"		#8-32
791-	Montcalm	69	96 mm		1-1/8"	1" x 5/8"	5-1/2"	#8-32
793-	Montcalm	69	3"		1"		4-1/8" x 2"	#8-32
794-	Montcalm	69		1-3/8"	1-1/8"	3/4"		#8-32
795-	Montcalm	69			1/4"	1-1/2"		#8-32
796-	Montcalm	69			1-1/8"	3/4"	1-1/2" x 1"	#8-32
797-	Montcalm	69	96 mm		1-1/8"	1/2"	4-1/2"	#8-32
800-	Meridian	68		1-3/8"	1-1/4"	1/2"		#8-32
801-	Meridian	68	96 mm		1-3/8"	5/8"	4-3/8"	#8-32
802-	Meridian	68	15"		3-1/16"	1-1/4"	16-1/4"	1/4-20
803-	Meridian	68	6"		1-3/8"	5/8"	7-5/8"	#8-32
805-	Ovale	14		1 1/4"	1"	1/2" x 1/4"		#8-32
808-	Ovale	14		1 1/4" x 1"	7/8"	1/2" x 1/4"		#8-32
809-	Ovale	14		1 1/4"	3/4"	1/2" x 1/4"		#8-32
810-	Vinci	13		1 1/4" x 1 1/4"	1"	1/2" x 1/4"		#8-32
814-	Vinci	13		1 1/4" x 7/8"	7/8"	1/2" x 1 1/4"		#8-32
815-	Vinci	13		1-3/4" x 1-3/4"	1-1/4"	1/2"		#8-32
816-	Vinci	13	96 mm		1"	6" x 1-1/4"	6" x 1-1/4"	#8-32
817-	French Court	90 - 92		1-1/4" x 1-3/8"	1-1/2"	7-3/8" x 1-1/4"	7-3/8" x 1-1/4"	#8-32
818-	Imperial Shell	84		1-3/8"	1"	1"		#8-32
819-	Imperial Shell	84	3"		3/4"	3-11/16" x 3/8"	4-1/2"	#8-32
830-	Arcadia	71		1-3/8"	1-1/4"	1/2"		#8-32
831-	Arcadia	71		1-3/4"	1-1/4"	1/2"	1-3/4" x 7/8"	#8-32
832-	Arcadia	71			1/8"		4-1/4" x 7/8"	#8-32
833-	Arcadia	71	96 mm		1-1/4"	3/4"	4-3/4"	#8-32
834-	Arcadia	71	3"		1-1/4"		3-3/4" x 1-5/8"	#8-32
835-	Arcadia	71	15"		2-1/2"	1-1/4"	15-3/4"	1/4-20

# INDEX

PART	COLLECTION	PAGE	PULL CENTER TO CENTER	KNOB DIAMETER	PROJECTION	BASE DIAMETER	OVERALL	SCREW SIZE
836-	Arcadia	71	6"		1-1/4"	3/4"	7"	#8-32
850-	Imperial Shell	84	4-1/2"		7/8"		7/8" x 5-1/2"	#8-32
851-	Imperial Shell	84		1-1/2"	5/8"	1"	1-1/2" x 1-1/4"	#8-32
852-	Imperial Shell	84	3"		3/4"	1"	1-1/4" x 4-1/2"	#8-32
853-	Imperial Shell	84		1-3/8"	1"	7/8"		#8-32
854-	Imperial Shell	84	3"		1-1/2"		3-1/2"	#8-32
857-	Imperial Shell	84		1-1/4"	1-3/4"	7/8"		#8-32
858-	Imperial Shell	84	4"		1"		3/4" x 6-1/4"	#8-32
859-	Eastlake	87		1-1/2"	1"	3/4"		#8-32
860-	Eastlake	87		1-3/4"	1"	3/4"		#8-32
861-	Eastlake	87	3-1/2"		1-1/4"		1-1/8" x 3-7/8"	#8-32
864-	Nature	99			1"		2-3/8" x 3-1/2"	#8-32
865-	Nature	99	3-5/8"		2-1/8"		1-1/2" x 8-5/8"	#8-32
868-	Corinthian	73	15"		2-1/8"	2-3/4" x 2"	18-5/8"	1/4-20
869-	Casual Elegance	72	15"		1-7/8"	2-3/8" x 1-7/8"	17-1/4"	1/4-20
870-	Corinthian	73		1-3/8"	1-1/4"	1"		#8-32
871-	Corinthian	73	96 mm		1"	1-1/2"	6-1/2"	#8-32
872-	Corinthian	73	3"		1"		4-3/4" x 1-3/4"	#8-32
873-	Casual Elegance	72		1-3/8"	1-1/8"	7/8"		#8-32
874-	Casual Elegance	72	96 mm		1-1/8"	1-1/4"	5-3/4"	#8-32
875-	Casual Elegance	72	3"		1"		4-1/4" x 1-3/4"	#8-32
876-	Empire	54		1-3/8"	1-1/8"	1"		#8-32
877-	Empire	54	4"		1-1/4"	7/8"	4-7/8"	#8-32
878-	Empire	54	3"		1-1/4"		4-3/8" x 1-7/8"	#8-32
879-	Empire	54	8"		1-1/4"	7/8"	8-7/8"	#8-32
880-	Empire	54	12"		1-5/8"	1-1/8"	13-1/8"	1/4-20
881-	Empire	54	15"		1-7/8"	1-3/16"	16"	1/4-20
882-	Empire	54		1-3/8"	1-1/8"	1"		#8-32
883-	Empire	54	3-1/2"		1-1/4"	7/8"	4"	#8-32
884-	Empire	54	5"		1-1/4"	7/8"	5-1/2"	#8-32
885-	Empire	54	6"		1-1/4"	7/8"	6-1/2"	#8-32
886-	Empire	54	10"		1-1/4"	7/8"	10-1/2"	#8-32
887-	Empire	54	12"		1-1/4"	7/8"	12-1/2"	#8-32
891-	Nature	99	1-1/2"		1-1/4"		2" x 2-7/8"	#8-32
892-	Nature	99	3-1/8"		1-3/8"		2-5/8" x 4-7/8"	#8-32

# INDEX

PART	COLLECTION	PAGE	PULL CENTER TO CENTER	KNOB DIAMETER	PROJECTION	BASE DIAMETER	OVERALL	SCREW SIZE
895-	Nature	99	5-1/2"		2-3/4"		1-3/8" x 6-3/4"	#8-32
897-	Nature	99			1-1/4"	1-1/4" x 1-1/2"	3" x 1-3/8"	#8-32
908-	Nature	99	3-3/4"		1-1/8"		1-1/8" x 6-1/8"	#8-32
915-	French Court	90 - 92	2"		7/8"		1-3/8" x 4-1/2"	#8-32
918-	Nature	99	4-1/4"		1-1/2"		1-1/2" x 4-3/4"	#8-32
919-	French Court	90 - 92	6-1/2"		1-11/16"		1-11/16" x 7-3/8"	#8-32
921L-	Sunflower	95		1-3/4"	1-1/8"	7/8"		#8-32
921M-	Sunflower	95		1-1/2"	15/16"	3/4"		#8-32
921S-	Sunflower	95		1-3/8"	7/8"	7/16"		#8-32
922-	Sunflower	95	5"		1-1/2"	1-1/4"	1-1/4" x 6-1/4"	#8-32
927-	Sonata	96		1-1/4"	1-1/8"	5/8"		#8-32
930-	Sonata	96		1-1/4"	1-1/8"	13/16"		#8-32
931-	Chalice	87		1-9/16"	1-1/16"	13/16"		#8-32
932-	Chalice	87		2-1/8"	1-1/2"	1-1/2"		#8-32
933-	Chalice	87			7/8"		2-9/16" x 2-3/8"	#8-32
934L-	French Court	90 - 92	5"		1-1/2"		2-3/8" x 7-1/8"	#8-32
934R-	French Court	90 - 92	5"		1-1/2"		2-3/8" x 7-1/8"	#8-32
935L-	French Court	90 - 92	3-1/2"		1-1/4"		1-11/16" x 5"	#8-32
935R-	French Court	90 - 92	3-1/2"		1-1/4"		1-11/16" x 5"	#8-32
936-	Swans	93		1-1/4"	1"	7/8"		#8-32
937-	Swans	93		1-1/2"	1-3/16"	1"		#8-32
939-	Swans	93	3"		1-5/8"	1-3/16"	9/16" x 4-1/8"	#8-32
940-	Swans	93	5"		2-5/8"	1-1/2"	7/8" x 6-3/4"	#8-32
941-	Swans	93	9"		4-5/8"	2-11/16"	1-3/4" x 12-3/8"	1/4-20
942M-	Wine Themes	98	6"		3-3/4"	3/4" x 1"	2-1/8" x 8"	1/4-20
942S-	Wine Themes	98	3"		1-3/4"	3/8" x 1/2"	7/8" x 4"	#8-32
944-	Wine Themes	98	1-1/2"		1-1/4"		1-1/4" x 4-1/2"	#8-32
945-	Wine Themes	98	4-9/16"		1-5/8"		2-1/8" x 5-1/4"	#8-32
951S-	Nature	99	1-5/8"		1-1/4"		2-3/8" x 4-1/2"	#8-32
952K-	Heirloom Treasures	97		1-1/2"	1"	1/2"		#8-32
952P-	Heirloom Treasures	97	5"		7/8"		1-1/8" x 5-5/8"	#8-32
953K-	Heirloom Treasures	97		1-1/2"	1"	1/2"		#8-32
953P-	Heirloom Treasures	97	5"		3/4"		1-1/4" x 5-7/8"	#8-32
954K-	Heirloom Treasures	97		1-1/2"	1"	1/2"		#8-32
954P-	Heirloom Treasures	97	3-3/4"		1"		1-5/16" x 4-3/8"	#8-32



# INDEX

PART	COLLECTION	PAGE	PULL CENTER TO CENTER	KNOB DIAMETER	PROJECTION	BASE DIAMETER	OVERALL	SCREW SIZE
958K-	Heirloom Treasures	97		1-11/16" x 1-1/2"	1"	3/8"		#8-32
958P-	Heirloom Treasures	97	6-1/2"		1-1/4"		1" x 7-3/8"	#8-32
960K-	Heirloom Treasures	97		1-1/2"	1"	5/8"		#8-32
960P-	Heirloom Treasures	97	6"		1-3/8"		1-3/8" x 7"	#8-32
967M-	Sonata	96		1-1/8"	7/8"	1-3/8"		#8-32
968M-	Sonata	96		1-5/16"	1"	5/8"		#8-32
969M-	Sonata	96		1-1/4"	1-1/8"	1-1/2"		#8-32
970-	Sunburst	94		1-1/4"	1-1/16"	1-11/16"		#8-32
972-	Sunburst	94		1-3/8"	1"	5/8"		#8-32
974-	Sunburst	94		1-1/2"	1-1/2"	3/4"		#8-32
975S-	Sunburst	94	5"		1-5/8"		1-1/8" x 6-1/8"	#8-32
977-	Sunburst	94		2-1/4"	5/8"	1-3/4"	2-1/4" x 3"	#8-32
978-	Sunburst	94	5-1/2"		3/4"	1-3/8"	2-1/8" x 6-5/8"	#8-32
980L-	Nature	99		1-1/2" x 1-1/4"	3/4"	1/2"		#8-32
980R-	Nature	99		1-1/2" x 1-1/4"	3/4"	1/2"		#8-32
982-	Sonata	96		11/16"	1"	1-15/16"		#8-32
987-	French Court	90 - 92	3-1/2"		5/8"		2-3/4" x 6"	#8-32
988-	French Court	90 - 92	5-3/8"		3/4"		2-3/4" x 8"	#8-32
989-	Imperial Shell	84		1-3/8"	15/16"		2-3/4"	#8-32
990-	Imperial Shell	84		1-3/8"	1-1/8"	7/8"		#8-32
992-4-	Imperial Shell	84	4"		1-1/16"	3/8"	4-3/4"	#8-32
992-6-	Imperial Shell	84	6"		1-1/16"	5/8"	7"	#8-32
992-8-	Imperial Shell	84	8"		1-1/16"	1/2"	9"	#8-32
993-	Cantata	88 - 89	5/8"		1"	3/4" x 3/8"	1-1/4" x 2"	#8-32
994-	Cantata	88 - 89		1-1/4"	1"	3/8"		#8-32
995-	Cantata	88 - 89	5"		1-3/8"	1/4"	7-1/2"	#8-32
996-	Cantata	88 - 89		2" x 7/8"	1"	1/2"		#8-32
997-	Cantata	88 - 89	8"		2-3/8"	1/2"	12"	#8-32
998-	Cantata	88 - 89	12"		3-1/4"	3/4"	18"	1/4-20
1100B-	Hinges	75			1/16"	2-1/2" x 7/8"	3"-L	#5
1100M-	Hinges	75			1/16"	2-1/2" x 7/8"	3-5/8"-L	#5
1111B-	Hinges	75			1/16"	2" x 3/4"	2-5/8"-L	#5
2340-	Mosaic	30	32 mm	2"	1"	1/2" x 1/4"		M4
2360-	Mosaic	30	96 mm		7/8"	3/8"	5-1/4"	M4
2370-	Mosaic	30		1-1/8"	3/4"	1/2"		M4

# INDEX

PART	COLLECTION	PAGE	PULL CENTER TO CENTER	KNOB DIAMETER	PROJECTION	BASE DIAMETER	OVERALL	SCREW SIZE
7465-	Country	63	15"		2"	1-3/4"	17-1/2"	1/4-20
7495-	Colonial	64	15"		2"	1"	16"	1/4-20
7915-	Montcalm	69	15"		1-3/4"	1-3/4" x 1-1/4"	18-1/2"	1/4-20
7918-	Montcalm	69	8"		1"	1" x 5/8"	9-3/4"	#8-32
7975-	Montcalm	69	15"		1-3/4"	7/8" x 3/4"	16-1/2"	1/4-20
7978-	Montcalm	69	8"		1-1/8"	1/2" x 1/2"	8-3/4"	#8-32
8716-	Corinthian	73	6"		1-1/4"	1-5/8"	8-3/4"	#8-32
8746-	Casual Elegance	72	6"		1-1/8"	1-1/4"	8"	#8-32
SS 010	Stainless Steel	43		3/4"	1-1/8"	3/4"		#8-32
SS 012	Stainless Steel	43		1-1/8"	7/8"	3/4"		#8-32
SS 014	Stainless Steel	43		1/2"	1-3/8"	1/2"	1-3/8"	#8-32
SS 096	Stainless Steel	43	96 mm		1-3/8"	1/2"	6-1/8"	#8-32
SS 128	Stainless Steel	43	128 mm		1-3/8"	1/2"	7-3/8"	#8-32
SS 160	Stainless Steel	43	160 mm		1-3/8"	1/2"	8-5/8"	#8-32
SS 224	Stainless Steel	43	224 mm		1-3/8"	1/2"	11-1/8"	#8-32
SS 288	Stainless Steel	43	288 mm		1-3/8"	1/2"	13-3/4"	#8-32
SS 384	Stainless Steel	43	384 mm		1-3/8"	1/2"	17-1/2"	#8-32
SS 448	Stainless Steel	43	448 mm		1-3/8"	1/2"	20"	#8-32
SS 544	Stainless Steel	43	544 mm		1-3/8"	1/2"	23-3/4"	#8-32
SS 640	Stainless Steel	43	640 mm		1-3/8"	1/2"	27-1/2"	#8-32
SS 736	Stainless Steel	43	736 mm		1-3/8"	1/2"	31-3/8"	#8-32
SS 832	Stainless Steel	43	832 mm		1-3/8"	1/2"	35-1/8"	#8-32
SS BOW 096	Stainless Steel	43	96 mm		1-1/8"	3/8" x 1/2"	4-1/2"	#8-32
SS BOW 128	Stainless Steel	43	128 mm		1-1/8"	3/8" x 5/8"	6-1/8"	#8-32
SS BOW 224	Stainless Steel	43	224 mm		1-1/8"	3/8" x 1"	10-1/4"	#8-32
SS BOW 288	Stainless Steel	43	288 mm		1-1/8"	3/8" x 1-1/8"	13-1/4"	#8-32



**House of Jade Kitchen**  
@houseofjadeinteriors  
Lindsay Salazar Photography



**Love It or List It Vancouver**  
@hgtvcanada  
Janis Nicolay Photography



**Love It or List It Vancouver**  
@hgtvcanada  
Janis Nicolay Photography



**The English Room**  
@theenglishroom  
Dustin Peck Photography



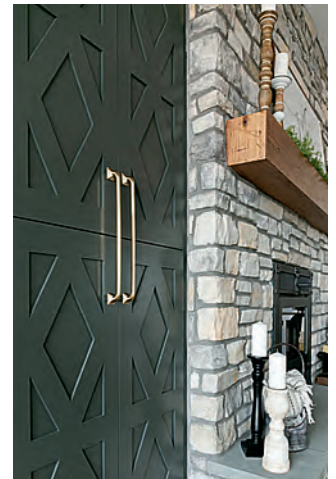
**Allison Knizek Design**  
@a.k.nackfordesign  
Troy Nikolic Photography



**Design Loves Detail**  
@designlovesdetail  
Travis J Photography



**Gowler Homes**  
@gowlerhomes  
Jacey Caldwell Photography



**Gowler Homes**  
@gowlerhomes  
Jacey Caldwell Photography



**Gowler Homes**  
@gowlerhomes  
Jacey Caldwell Photography



**Love It or List It Vancouver**  
@hgtvcanada  
Janis Nicolay Photography



**Love It or List It Vancouver**  
@hgtvcanada  
Janis Nicolay Photography



**Design Loves Detail**  
@designlovesdetail  
Travis J Photography

ASSA ABLOY is the global leader in door opening solutions, dedicated to satisfying end-user needs for security, safety and convenience



Phone: 616.871.0040

Fax: 800.453.2196

[schaubandcompany.com](http://schaubandcompany.com)

